

2016 Six (6) Airbus A320-216



Factory New Aircraft

AIRCRAFT IDENTIFICATION	
Aircraft Type:	Airbus A320-216
Engine Model:	CFM56-5B
Year of Manufacturer:	JULY, AUGUST 2016
Noise Abatement Compliance:	Stage 4, ICAO Annex 16 Volume 1
Interior Arrangement:	Y180
In Flight Entertainment:	None
Lavatory:	3 x LA, LD, LE
Galley:	2 x G1, G5
Blended Winglets:	Yes

WEIGHTS, OPERATIONAL	US	European
Maximum Taxi Weight (MTW):	167`331 (lbs)	75`900 (kg)
Maximum Take Off Weight (MTOW):	166`449 (lbs)	75`500 (kg)
Maximum Landing Weight (MLW):	145`505 (lbs)	66`000 (kg)
Maximum Zero Fuel Weight (MZFW):	137`789 (lbs)	62`500 (kg)
Aircraft Basic Empty Weight (BEW)*:	93`900 (lbs)*	42`600 (kg)*
Maximum Usable Fuel Capacity (SG 0.8):	24`210 (litr)	19`368 (kg)

* Average

AIRFRAME STATUS	
Total Airframe Hours:	00:00*
Total Airframe Cycles:	0*
Status Date:	2016

* Expect about 10 FH and 5 FC at delivery from AIRBUS

MAINTENANCE STATUS	
The Operators approved Maintenance Program is conforming to Manufacturer`s MPD.	
Base Check interval:	7500 FH, 5000 FC, 24 Month (whichever comes first)
Line Check interval:	750 FH, 750 FC, 121 Days (whichever comes first)
Last Base Check performed:	None
Next Base Maintenance Check:	None

ENGINE / APU DETAILS	Engine 1	Engine 2	APU
Manufacturer:	CFMI	CFMI	Honeywell
Model:	CFM56-5B6/3	CF56-5B6/3	GTCP 131-9A

ENGINE / APU STATUS	Engine 1	Engine 2	APU
Thrust Rate:	23`500 Lbs	23`500 Lbs	
Total Time Since New:	00:00*	00:00*	TBA
Total Cycles Since New:	0*	0*	TBA
Last Performance Restoration:	None	None	None
Last Overhaul:	None	None	None
Hours Since Last Shop Visit:	00:00	00:00	00:00
Cycles Since Last Shop Visit:	0	0	0
First Limiter:	20`000	20`000	30`000
Status Date:	2016	2016	2016

* Expect about 10 FH and 5 FC at delivery from AIRBUS

LANDING GEARS	NLG	LH MLG	RH MLG
Manufacturer:	MESSIER – DOWTY		
Part Number:	D23757500-8	201582001-060	201582002-060
Position:	NLG	LH MLG	RH MLG
Hours Since New:	00:00	00:00	00:00
Cycles Since New:	0	0	0
Last Overhaul Date:	None	None	None
Cycles Since Overhaul:	0	0	0
Status Date:	2016	2016	2016
Overhaul Interval:	20`000 CYC or 10 Years	20`000 CYC or 10 Years	20`000 CYC or 10 Years

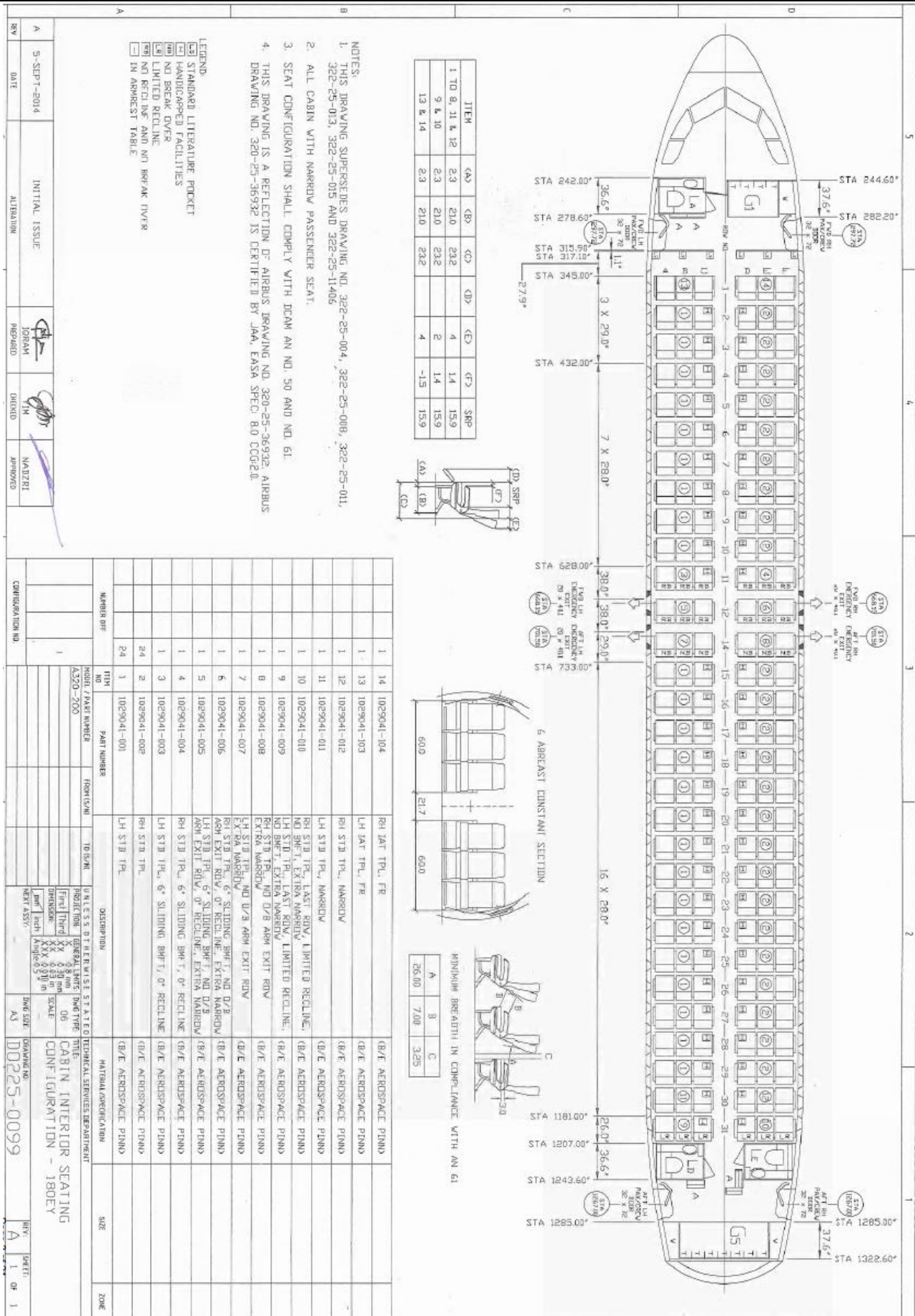
* Expect about 5 FC at delivery from AIRBUS

INTERIOR			
Description	QTY	Manufacturer	Part Number
ATA 25 - Equipment & Furnishing			
Seats Tourist: <i>(Leather)</i>	180	BE AEROSPACE	1029041-XXX
Galley G1:	1	DRIESSEN	601851-001401
Galley G5:	1	DRIESSEN	601857-001901
AUTO Steam Ovens:	2	BE AEROSPACE	4333100-01-6600
Meal Ovens:	2	BE AEROSPACE	236152
Water Heaters:	2	BE AEROSPACE	4360004-85-0018

MAJOR AVIONICS EQUIPMENT			
Description	QTY	Manufacturer	Part Number
ATA 22 - Automatic Flight Controls			
FMGC	2	THALES	C13208AA00
FAC	2	THALES	C13206AA00
MCDU	2	THALES	C19266EA01
FCU	1	THALES	C12850AC03
ATA 23 - Communication			
Transceiver VHF/COMM	3	ROCKWELL COLLINS	822-1287-121
Transceiver HF	2	ROCKWELL COLLINS	822-0990-003
CIDS Director	2	AIRBUS	Z014H000333B
FAP Panel	1	AIRBUS	Z133H053151E
Cockpit Voice Recorder (SSCVR)	1	L-3 COMM	2100-1026-02
ELT (Fixed)	1	THALES	S1851501-01
Integrated CDSS System (Controller)	1	BF GOODRICH	8420B1-401
ATA 27 - Flight Controls			
ELAC	2	THALES	3945129108
SEC	3	THALES	B372CAM0100
FCDC	2	LIFET	115370-1520
SFCC	2	DIEHL AEROSPACE	200301E00000308
ATA 31 - Indication and Recording System			
Flight Data Recorder (SSFDR)	1	L-3 COMM	2100-4045-00
FDIMU	1	TELEDYNE	2234320-01-01
FWC	2	AIRBUS	350E053021212
Printer Multi-Port FANS	1	ALLIED-SIGNAL	8055515-4501
DMC	3	THALES	1982660116
Display Unit	6	THALES	C19298AF05
ATA 34 – Navigation			
Multi Mode Receiver ILS/GPS	2	ROCKWELL COLLINS	822-1821-430
Weather Radar Multi-scan Transceiver	1	ROCKWELL COLLINS	822-1710-214
TCAS II Computer	1	L-3 COMM	9005000-10202
ATC-Mode S Transponder	1	L-3 COMM	7517800-10100
Radio Altimeter Transceiver	2	THALES	9599-607-14943
ADIRU	3	HONEYWELL	HG2030BE04
EGPWC	1	HONNEYWELL	965-1676-002
VOR Marker Beacon	2	ROCKWELL COLLINS	822-0297-020
DME	2	ROCKWELL COLLINS	822-2325-020
ADF	1	ROCKWELL COLLINS	822-0299-020
Integrated Stby Indication Sys. (ISIS)	1	THALES	C16786EA01

ENGINE LLP						
POS# 1.	PN:	CFM56-5B6/3	SN:	TBA	Status Date:	2016
DESCRIPTION	PN	SN	TSN	CSN	LIMIT	REMAINING
LPC ROTOR ASSY						
SHAFT, FAN	338-010-601-0	TBA	TBA	TBA	30'000	TBA
SPOOL, BOOSTER	338-001-906-0	TBA	TBA	TBA	30'000	TBA
DISK, FAN	338-001-504-0	TBA	TBA	TBA	30'000	TBA
HPC ROTOR ASSY						
FRONT SHAFT, HPC	1386M56P03	TBA	TBA	TBA	20'000	TBA
CDP ROT. REAR AIR SEAL	1523M35P01	TBA	TBA	TBA	20'000	TBA
HPCR SPOOL STG 1-2	1558M31G04	TBA	TBA	TBA	20'000	TBA
HPCR DISK STG 3	1590M59P01	TBA	TBA	TBA	20'000	TBA
HPCR SPOOL ASSY STG 4-9	1588M89G03	TBA	TBA	TBA	20'000	TBA
HPT ROTOR ASSY						
HPTR DISK	1498M43P06	TBA	TBA	TBA	20'000	TBA
HPT FRONT ROT. SEAL	1795M36P02	TBA	TBA	TBA	20'000	TBA
HPTR FRONT SHAFT	1873M73P01	TBA	TBA	TBA	20'000	TBA
HPTR REAR SHAFT	1864M90P05	TBA	TBA	TBA	20'000	TBA
LPT ROTOR ASSY						
LPTR DISK STG 1	336-001-804-0	TBA	TBA	TBA	25'000	TBA
LPTR DISK STG 2	336-001-909-0	TBA	TBA	TBA	25'000	TBA
LPTR DISK STG 3	336-002-006-0	TBA	TBA	TBA	25'000	TBA
LPTR DISK STG 4	336-002-105-0	TBA	TBA	TBA	25'000	TBA
LPTR SHAFT	338-010-005-0	TBA	TBA	TBA	25'000	TBA
LPTR SUPPORT	338-077-502-0	TBA	TBA	TBA	25'000	TBA

ENGINE LLP						
POS# 2.	PN:	CFM56-5B6/3	SN:	TBA	Status Date:	2016
DESCRIPTION	PN	SN	TSN	CSN	LIMIT	REMAINING
LPC ROTOR ASSY						
SHAFT, FAN	338-010-601-0	TBA	TBA	TBA	30'000	TBA
SPOOL, BOOSTER	338-001-906-0	TBA	TBA	TBA	30'000	TBA
DISK, FAN	338-001-504-0	TBA	TBA	TBA	30'000	TBA
HPC ROTOR ASSY						
FRONT SHAFT, HPC	1386M56P03	TBA	TBA	TBA	20'000	TBA
CDP ROT. REAR AIR SEAL	1523M35P01	TBA	TBA	TBA	20'000	TBA
HPCR SPOOL STG 1-2	1558M31G04	TBA	TBA	TBA	20'000	TBA
HPCR DISK STG 3	1590M59P01	TBA	TBA	TBA	20'000	TBA
HPCR SPOOL ASSY STG 4-9	1588M89G03	TBA	TBA	TBA	20'000	TBA
HPT ROTOR ASSY						
HPTR DISK	1498M43P06	TBA	TBA	TBA	20'000	TBA
HPT FRONT ROT. SEAL	1795M36P02	TBA	TBA	TBA	20'000	TBA
HPTR FRONT SHAFT	1873M73P01	TBA	TBA	TBA	20'000	TBA
HPTR REAR SHAFT	1864M90P05	TBA	TBA	TBA	20'000	TBA
LPT ROTOR ASSY						
LPTR DISK STG 1	336-001-804-0	TBA	TBA	TBA	25'000	TBA
LPTR DISK STG 2	336-001-909-0	TBA	TBA	TBA	25'000	TBA
LPTR DISK STG 3	336-002-006-0	TBA	TBA	TBA	25'000	TBA
LPTR DISK STG 4	336-002-105-0	TBA	TBA	TBA	25'000	TBA
LPTR SHAFT	338-010-005-0	TBA	TBA	TBA	25'000	TBA
LPTR SUPPORT	338-077-502-0	TBA	TBA	TBA	25'000	TBA



ADDITIONAL INFORMATION	
RFC Title	Last SCN issue
ENGINE, ENGINE ACCESSORIES AND APU ALTERNATE LUBRICATING OIL - BPTO 2380	M79D0010101S2C
CFMI ENGINES - CFM56-5B6/3 (SAC - TECH INSERTION - PIP) AT 23 500 LBF NOMINAL THRUST (A320-216)	M72D0012010S1C
INSTALLATION OF SHARKLETS LARGE WINGTIP DEVICES	M57D1020001S1C
ALTERNATE FRONT WINDOWS - GKN AEROSPACE	M56D1010209S1C
INSTALLATION OF EROSION PROTECTION ON VERTICAL STABILIZER LEADING EDGE - STAINLESS STEEL	M55D3010101S1C
RAM AIR INLET LEADING EDGE PROTECTION (ALUMINUM)	M53D3510002S1C
BELLY FAIRING PANELS - ADD EXTRUSION	M53D3005001S1C
ALTERNATE PAINT SYSTEM (CF PRIMER, BASE COAT/CLEAR COAT) ON FUSELAGE & VERT. STABILIZER - ANAC	M51D2270502S1C
ALTERNATE PAINT SYSTEMS (CF PRIMER) ON NACELLES - ANAC	M51D2221504S1C
APU ALTERNATE EQUIPMENT - HONEYWELL, GTCP131-9A	M49D0010518S1C
AIRBUS STANDARD AOC SOFTWARE FROM ROCKWELL COLLINS WITH UNITS IN KG (BY DEFAULT)	M46D2110213S1C
INSTALLATION OF AUXILIARY COMPRESSOR IN THE POTABLE WATER PRESSURIZATION SYSTEM	M38D4110101S1C
LAVATORY WATER FAUCET FLOW TIME ADJUSTMENT TO 5 SECONDS	M38D1211903S1C
COCKPIT PBE ALTERNATE EQUIPMENT (SFE) - AVOX SYSTEMS INC.	M35D3110804S1C
INSTALLATION OF FOUR OXYGEN MASKS PER BOX	M35D2001001S1C
COCKPIT OXYGEN CYLINDER ALTERNATE EQUIPMENT 115 CU FT (STEEL) - AVOX SYSTEMS	M35D1120102S1C
INSTALLATION OF SECOND COCKPIT PBE (SFE) IN COAT STOWAGE - AVOX SYSTEMS INC.	M35D3111103S1C
COMPLIANCE WITH ADS-B OUT REGULATION FOR RAD & NRA OPERATIONS	M34D5211703S1C
ALTERNATE FULL SINGLE WXR (ARINC 708A) WITH MULTISCAN AND HAZARD FUNCTIONS - ROCKWELL COLLINS PN-411	M34D4130206S2C
RADIO ALTITUDE AUTOMATIC CALL-OUTS	M34D4211701S1C
RNP AR 0.3 NM CAPABILITY WITH LATERAL DEVIATION FUNCTION	M34D0030004S1C
INSTALLATION OF FLOOR-MOUNTED EEPMS LUFTHANSA T. -900, WITH CLIP COVER / EXIT IDENTIFIER - AIRSIGNA	M33D5011401S1C
EXTENSION OF FLOOR-MOUNTED EEPMS TO FWD & AFT PASSENGER/CREW/SERVICE DOORS - LUFTHANSA TECHNIK	M33D5011111S1C
INSTALLATION OF BRIGHTER LED PILOT CHART HOLDER AND MAP READING LIGHTS	M33D1210902S1C
INSTALLATION OF DARK YELLOW FILTER ON FLOOR-MOUNTED EEPMS LUFTHANSA TECHNIK -900 - WHOLE CABIN	M33D5011706S1C
INSTALLATION OF UNIVERSAL BRAKE COOLING FANS ON MESSIER WHEELS AND BRAKES	M32D4820011S1C
NLG TIRES SELECTION - MICHELIN (30X8.8-R15 RADIAL TIRES)	M32D4112005S1C
MLG TIRES SELECTION - MICHELIN (46X17-R20 RADIAL TIRES), PN M01103-02	M32D4111114S1C
INDICATION OF METRIC ALTITUDE ON PFD	M31D6011401S1C
WGL-DAR (2 HSPA+ MODULES) EQUIPPED WITH 8 GB CF MEMORY CARD - TELEDYNE (BFE) (ARINC 591/600)	M31D3616146S1C

ELECTROPUMPS ALTERNATE EQUIPMENT - EATON AEROSPACE	M29D2110407S1C
INSTALLATION OF ADDITIONAL REFUEL/DEFUEL COUPLING IN LH WING	M28D2510701S1C
COCKPIT PORTABLE FIRE EXTINGUISHER ALTERNATE EQUIPMENT - TOTAL FEUERSCHUTZ, PN 74-20	M26D2411103S1C
COCKPIT FLASHLIGHTS ALTERNATE EQUIPMENT (SFE) - DME CORPORATION, PN P2-07-0001-214	M25D6500209S1C
INSTALLATION OF DOUBLE-SIDED ADHESIVE TAPE FOR CARPET	M25D2810302S1C
REDUCTION OF INFANT LIFE VEST QTY	M25D6519269S1C
ELT PN CHANGE FROM S1823502-03 TO S1823502-05, THALES AVIONICS S.A. (BFE)	M25D6519260S1C
CARPET CHANGE TO BOTANY PN 1BWW1593	M25D2813128S1C
LAVATORY WASTE FLAP ALTERNATE MATERIAL - STAINLESS STEEL	M25D4518102S1C
CARPET PN 504-321013 NOT COMPLIANT WITH AIB ABD0031	M25D2813123S1C
INSTALLATION OF 1 EXTENDED STOWAGE COMPARTMENT (HANDGRIP MAINTAINED) INSTEAD OF 1 OVEN, GALLEY LOC.I	M25D3113217S1C
INSTALLATION OF DOUBLE DEEP EMERGENCY EQUIPMENT CONTAINER(S) IN SFE GALLEYS (SFE)	M25D3514005S1C
INSTALLATION OF SINGLE DEEP EMERGENCY EQUIPMENT CONTAINER(S) IN SFE GALLEYS (SFE)	M25D3514004S1C
INSTALLATION OF 1 STOWAGE BOX INSTEAD OF FS TROLLEY OUTSIDE POSITIONS (FIXED PART), GALLEY AT LOC V	M25D3353216S1C
CARGO HOLD CONFIGURATION	M25D5000100G1C
NON INSTALLATION OF NON-ELECTRICAL GALLEY CATERING/LOOSE EQUIPMENT (BFE)	M25D3513206S1C
INSTALLATION OF MINIMUM NON-ELECTRICAL GALLEY CATERING EQUIPMENT (BFE)	M25D3513109S1C
INSTALLATION OF 1 STOWAGE BOX INSTEAD OF 1 FS TROLLEY OUTSIDE POS. (FIXED PART) ON GALLEY AT LOC. I	M25D3113216S1C
GALLEY AND GALLEY CATERING DEFINITION	M25D3000200G1C
INSTALLATION OF PROVISION FOR EMERGENCY EQUIPMENT	M25D6519672S1C
INSTALLATION OF NEW TRANSITION PANEL AT DOOR 1 RH FRAME LINING	M25D2321002S1C
INSTALLATION OF NEW TRANSITION PANEL AT DOOR 1 LH FRAME LINING	M25D2321001S1C
INSTALLATION OF 16G CABIN ATTENDANT SEAT AS PER CUSTOMIZED CABIN LAYOUT	M25D2200211S1C
CABIN EMERGENCY EQUIPMENT	M25D0000100G1C
CABIN LAYOUT DEFINITION	M25D2000100G2C
NTF SELECTION (SFE STANDARD I) - METZELER AIRFLOOR AFR - DA8	M25D2820051S1C
INTERIOR COLOUR SCHEME DEFINITION	M25D2350001S1C
INSTALL NEW STANDARD OF INTEGRATED DRIVE GENERATOR (IDG) SYSTEM (P/N 1708897) (CFM A/C ONLY)	M24D2100009S1C
INSTALLATION OF A COCKPIT DOOR SURVEY SYSTEM	M23D7011002S1C
BOOMSETS ALTERNATE EQUIPMENT - TELEX COMMUNICATIONS, PN 64300-210	M23D5113627S1C
COCKPIT HAND MICROPHONE ALTERNATE EQUIPMENT - HOLMBERG, PN 85-16-12022-05	M23D5013806S1C
CHANGE OF "CABIN READY" INDICATION ON ECAM	M23D7321413S1C

AUTO. PROGR. ELT (406 AF INTEGRA) WITH PROG. DONGLE AND REMOTE CONTROL PANEL - THALES (BFE)	M23D0013247S1C
SINGLE DIAL CODE KEYBOARD	M23D7300274S1C
INSTALLATION OF DUAL HF SYSTEM (DATA LINK CAPABLE) - ROCKWELL COLLINS 900	M23D1115608S1C
ENTERTAINMENT SYSTEM	M23D3600100G1C
CIDS CHANGES	M23D7300100G1C
FM KITS (REL. 1A - FMGC S7APC13) / MCDU ALTERN. EQUIP - THALES AVIONICS/SMITH ASSOC. WITH CFM ENGINE	M22D7010066S2C
LOC BACK-BEAM APPROACH & BACK-COURSE TAKE-OFF ACTIVATION	M22D7016102S1C
CABIN AIR RECIRCULATION FILTER CARTRIDGE EQUIPMENT SELECTION - LE BOZEC, PN 424B200-7	M21D2010803S1C
ENGINE DANGER AREA DECALS (FEET ONLY) - CFMI ENGINES	M11D2010801S1C
MSN ON REGISTRATION AND SELCAL CODE COCKPIT PLACARD	M11D3110412S1C
ADDITIONAL OWNERSHIP PLATE AS LOOSE EQUIPMENT	M11D0010461S1C
INSTALLATION OF LEASING IDENTIFICATION PLATES ON ENGINES, LH DOOR FRAME AND LAV A PARTITION	M11D0012401S1C
A320-216 INCREASED DESIGN WEIGHTS - MTOW TO 75.5 T, MLW TO 66 T, MZFW TO 62.5 T (WV 011)	M03D2051611S1C
A320-200 DUAL OPERATIONAL WEIGHT CAPABILITY - WV011 (75.5T/66T/62.5T) / WV016 (73.5T/66T/62.5T)	M03D2015116S1C
AIRCRAFT OPERATION ON RUNWAYS FROM 30M TO 45M WIDE	M02D1012301S1C
15 KNOTS TAILWIND CERTIFICATION AT TAKE-OFF	M02D1012001S1C
CERTIFICATION OF DYNAMICALLY TESTED PASSENGER SEATS Y/C	M02D1010406S1C
COMPLIANCE WITH CS25/FAR 25.562 (HEAD INJURY CRITERIA - HIC)	M02D1212303S1C
OPERATION WITH 10 MINUTES ONE ENGINE TAKEOFF THRUST (CFM 56-5B6)	M02D1014103S1C
15 KNOTS TAILWIND CERTIFICATION AT LANDING	M02D1012002S1C

SCN LIST			
ATA	DESCRIPTION	VENDOR	PART NUMBER
21	FAN,EXTRACTION	APPARATEBEAU GAUTING GMBH	VD3920
21	VALVE,SAFETY	NORD-MICRO AG & CO OHG	9024-15704-03
21	VALVE,SAFETY	NORD-MICRO AG & CO OHG	9024-15704-03
21	ACTUATOR,EMER.RAM AIR	ELEKTRO-METALL EXPORT GMBH	41-2-1100-02
21	RAM AIR INLET ACTUATO	LIEBHERR-AEROSPACE TOULOUSE SA	1809A0000-01
21	RESIDUAL PRES.CONT.UN	APPARATEBEAU GAUTING GMBH	RPCU9167-01
21	VALVE OUTFLOW	NORD-MICRO AG & CO OHG	20790-20BA
21	PACK-AIR CONDITIONING	LIEBHERR-AEROSPACE TOULOUSE SA	2301C0000-01
21	AEVC	THALES AVIONICS SA	87292325V07
21	VALVE-TRIM AIR	LIEBHERR-AEROSPACE TOULOUSE SA	1320A0000-02
21	CONTROLLER,PRESSURE	NORD-MICRO AG & CO OHG	20791-13AD
21	PACK-AIR CONDITIONING	LIEBHERR-AEROSPACE TOULOUSE SA	2301C0000-01
21	VALVE-TRIM AIR	LIEBHERR-AEROSPACE TOULOUSE SA	1320A0000-02
21	CONTROLLER,PRESSURE	NORD-MICRO AG & CO OHG	20791-13AD
21	VALVE-TRIM AIR	LIEBHERR-AEROSPACE TOULOUSE SA	1320A0000-02
21	FAN,RECIRCULATION	APPARATEBEAU GAUTING GMBH	VD3900-03
21	PRESSURE SENSOR	LIEBHERR-AEROSPACE TOULOUSE SA	9106A0005-02
21	TAPRV	LIEBHERR-AEROSPACE TOULOUSE SA	70853A010001
21	FAN,RECIRCULATION	APPARATEBEAU GAUTING GMBH	VD3900-03
21	SENSOR,TEMP.	LIEBHERR-AEROSPACE TOULOUSE SA	764A0000-03
21	CHECK VALVE	LIEBHERR-AEROSPACE TOULOUSE SA	769B0000-01
21	AIR OUTLET/INLET VALVE	TECHNOFAN	VFT210B00
21	SENSOR,TEMP.	LIEBHERR-AEROSPACE TOULOUSE SA	764A0000-03
21	CHECK VALVE	LIEBHERR-AEROSPACE TOULOUSE SA	769B0000-01
21	AIR BUTTERFLY VALVE	TECHNOFAN	V2T152D
21	SENSOR,TEMP.	LIEBHERR-AEROSPACE TOULOUSE SA	764A0000-03
21	PRESSURE SWITCH	LE BOZEC FILTRATION ET SYSTEMES	1209-100
21	CHECK VALVE	LIEBHERR-AEROSPACE TOULOUSE SA	1298A0000-01
21	FAN	TECHNOFAN	EVT3454HC
21	CHECK VALVE	LIEBHERR-AEROSPACE TOULOUSE SA	1298A0000-01
21	PRESSURE SWITCH	LE BOZEC FILTRATION ET SYSTEMES	1209-100
21	ACTUATOR,ROTARY	NORD-MICRO AG & CO OHG	6610-20560-01
21	PRESSURE SENSOR	LIEBHERR-AEROSPACE TOULOUSE SA	9106A0005-02
21	SELECTOR,LDG.FIELD EL	NORD-MICRO AG & CO OHG	9027-20010
21	INJECTOR,WATER	LIEBHERR-AEROSPACE TOULOUSE SA	1091A0000-01
21	FAN	TECHNOFAN	EVT3454HC
21	SENSOR,TEMP.	LIEBHERR-AEROSPACE TOULOUSE SA	773A0000-01
21	INJECTOR,WATER	LIEBHERR-AEROSPACE TOULOUSE SA	1091A0000-01
21	AIR BUTTERFLY VALVE	TECHNOFAN	V2T127D
21	SENSOR,TEMP.	LIEBHERR-AEROSPACE TOULOUSE SA	773A0000-01
21	AIR OUTLET VALVE	TECHNOFAN	VFT300B00
21	FLOW CONTROL UNIT	LIEBHERR-AEROSPACE TOULOUSE SA	1806D0000-01
21	SENSOR,TEMP.	LIEBHERR-AEROSPACE TOULOUSE SA	773A0000-01
21	AIR BUTTERFLY VALVE	TECHNOFAN	V2T152D
21	FLOW CONTROL UNIT	LIEBHERR-AEROSPACE TOULOUSE SA	1806D0000-01
21	SENSOR,TEMP.	LIEBHERR-AEROSPACE TOULOUSE SA	764A0000-03
21	AIR BUTTERFLY VALVE	TECHNOFAN	V2T152D
21	SENSOR,TEMP.	LIEBHERR-AEROSPACE TOULOUSE SA	764A0000-03
21	DUCT TEMPERATURE SENSOR	THALES AVIONICS SA	87232323V00
21	TEMP.SELECTOR	LIEBHERR-AEROSPACE TOULOUSE SA	777B0000-02
21	RAM AIR INLET ACTUATO	LIEBHERR-AEROSPACE TOULOUSE SA	1809A0000-01

21	TEMP.SELECTOR	LIEBHERR-AEROSPACE TOULOUSE SA	777B0000-02
21	SKIN TEMPERATURE SENSOR	THALES AVIONICS SA	87232324V00
21	TEMP.SELECTOR	LIEBHERR-AEROSPACE TOULOUSE SA	777B0000-02
21	PRESSURE SWITCH	LE BOZEC FILTRATION ET SYSTEMES	1209-100
21	AIR COND SYSTEM CONTR	LIEBHERR-AEROSPACE TOULOUSE SA	1803B0000-02
21	AIR COND SYSTEM CONTR	LIEBHERR-AEROSPACE TOULOUSE SA	1803B0000-02
21	CONTROLLER,CSAS	LIEBHERR-AEROSPACE TOULOUSE SA	3959A0000K06
21	MODUL,CSAS	LIEBHERR-AEROSPACE TOULOUSE SA	3960A1000-02
21	VALVE-ISOLATION	LIEBHERR-AEROSPACE TOULOUSE SA	3957A0000-02
21	AIR CHECK VALVE	TECHNOFAN	CT191B
21	VALVE,CHECK-	NORD-MICRO AG & CO OHG	12664
21	VALVE,CHECK-	NORD-MICRO AG & CO OHG	12664
21	VALVE,CHECK-	NORD-MICRO AG & CO OHG	12664
21	OZONE CONVERTER-ASSY	LIEBHERR-AEROSPACE TOULOUSE SA	70227A010001
22	FLIGHT MANAGEMENT GUID COMP	THALES AVIONICS SA	C13208AA00
22	S/W-FM OPTION CONFIG	THALES AVIONICS SA	G2881ABH01
22	S/W-PERF DATA BASE	THALES AVIONICS SA	G2831AAC01
22	S/W-FMS SOFTWARE	THALES AVIONICS SA	G2604AAH02
22	S/W-FM MAG VAR DATA BASE	THALES AVIONICS SA	G1748AAC01
22	SOFTWARE-FMGC1 FG OPERATIONAL	THALES AVIONICS SA	G2858AAA02
22	FLIGHT MANAGEMENT GUID COMP	THALES AVIONICS SA	C13208AA00
22	S/W-FM OPTION CONFIG	THALES AVIONICS SA	G2881ABH01
22	S/W-PERF DATA BASE	THALES AVIONICS SA	G2831AAC01
22	S/W-FMS SOFTWARE	THALES AVIONICS SA	G2604AAH02
22	S/W-FM MAG VAR DATA BASE	THALES AVIONICS SA	G1748AAC01
22	SOFTWARE-FMGC1 FG OPERATIONAL	THALES AVIONICS SA	G2858AAA02
22	FLIGHT AUGMENTATION COMPUTER	THALES AVIONICS SA	C13206AA00
22	SOFTWARE-FAC 1 OPERATIONAL PRO	THALES AVIONICS SA	G2856AAA02
22	FLIGHT AUGMENTATION COMPUTER	THALES AVIONICS SA	C13206AA00
22	SOFTWARE-FAC 1 OPERATIONAL PRO	THALES AVIONICS SA	G2856AAA02
22	FLIGHT CONTROL UNIT	THALES AVIONICS SA	C12850AC03
22	MCDU	THALES AVIONICS SA	C19266EA01
22	MCDU	THALES AVIONICS SA	C19266EA01
22	RUDDER TRIM CONTROL SWITCH	GOODRICH ACTUATION SYSTEM SAS	27-457
22	RUDDER TRIM INDICATOR	ECE EQUIPEMENT	196PN01Y02
23	VHF/COMM.TRANSCEIVER	ROCKWELL COLLINS INC AIR TRANSPORT D	822-1287-121
23	VHF/COMM.TRANSCEIVER	ROCKWELL COLLINS INC AIR TRANSPORT D	822-1287-121
23	VHF/COMM.TRANSCEIVER	ROCKWELL COLLINS INC AIR TRANSPORT D	822-1287-121
23	RADIO MANAGEMENT PANEL	THALES AVIONICS SA	C12848CB01
23	RADIO MANAGEMENT PANEL	THALES AVIONICS SA	C12848CB01
23	COCKPIT VOICE RECORDER	L-3 COMMUNICATIONS CORP	2100-1026-02
23	AUDIO MANAGEMENT UNIT	TEAM	AMU4031SA140204
23	AUDIO CONTROL PANEL	TEAM	ACP2788AD01
23	AUDIO CONTROL PANEL	TEAM	ACP2788AD01
23	AUDIO CONTROL PANEL	TEAM	ACP2788AD01
23	HF/COMM.TRANSCEIVER	ROCKWELL COLLINS INC AIR TRANSPORT D	822-0990-003
23	HF/COMM.TRANSCEIVER	ROCKWELL COLLINS INC AIR TRANSPORT D	822-0990-003
23	SELCAL CODE SELECTION PANEL	TEAM	BC2065C
23	VHF ANTENNA	CHELTON ANTENNAS GROUPE COBHAM	2438-89-00
23	VHF ANTENNA	CHELTON ANTENNAS GROUPE COBHAM	2438-89-00
23	VHF ANTENNA	CHELTON ANTENNAS GROUPE COBHAM	2438-89-00
23	HF-ANTENNA COUPLER	ROCKWELL COLLINS INC DIV GOVERNMENT	822-0987-003
23	HF-ANTENNA COUPLER	ROCKWELL COLLINS INC DIV GOVERNMENT	822-0987-003

23	LCD/SYSTEM CONTROLLER	BF GOODRICH-AIRCR.SENSORS DIV(ROSEMO	8420B1-401
23	COCKPIT DOOR CAMERA	BF GOODRICH-AIRCR.SENSORS DIV(ROSEMO	8410B5-101-105
23	COCKPIT DOOR CAMERA	BF GOODRICH-AIRCR.SENSORS DIV(ROSEMO	8410B5-4-90
23	COCKPIT DOOR CAMERA	BF GOODRICH-AIRCR.SENSORS DIV(ROSEMO	8410B5-4-90
23	AMBIENT MICROPHONE	L-3 COMMUNICATIONS CORP	93A055-66
23	ROTARY SWITCH	IEC ELECTRONIQUE SAM	058-001-00
23	PREAMPLIFIER MODULE	L-3 COMMUNICATIONS CORP	93A150-20
23	DIRECTOR-CIDS	AIRBUS OPERATIONS GMBH CABIN ELECTRO	Z014H000333B
23	DIRECTOR-CIDS	AIRBUS OPERATIONS GMBH CABIN ELECTRO	Z014H000333B
23	CABIN ASSIGNM.MODULE	AIRBUS OPERATIONS GMBH CABIN ELECTRO	Z054H003B080
23	OBRM	AIRBUS OPERATIONS GMBH CABIN ELECTRO	Z064H000033B
23	I-PRAM	AIRBUS OPERATIONS GMBH CABIN ELECTRO	Z163H0000103
23	CIDS MP-FAP	AIRBUS OPERATIONS GMBH CABIN ELECTRO	Z133H053151E
23	AAP	AIRBUS OPERATIONS GMBH CABIN ELECTRO	Z120H050830B
23	HANDSET,COCKPIT	HOLMBERG GMBH & CO.KG	N40-1B10100-101
23	DEU A	AIRBUS OPERATIONS GMBH CABIN ELECTRO	Z033H0003112
23	DEU A	AIRBUS OPERATIONS GMBH CABIN ELECTRO	Z033H0003112
23	DEU A	AIRBUS OPERATIONS GMBH CABIN ELECTRO	Z033H0003112
23	DEU A	AIRBUS OPERATIONS GMBH CABIN ELECTRO	Z033H0003112
23	DEU A	AIRBUS OPERATIONS GMBH CABIN ELECTRO	Z033H0003112
23	DEU A	AIRBUS OPERATIONS GMBH CABIN ELECTRO	Z033H0003112
23	DEU A	AIRBUS OPERATIONS GMBH CABIN ELECTRO	Z033H0003112
23	DEU A	AIRBUS OPERATIONS GMBH CABIN ELECTRO	Z033H0003112
23	DEU A	AIRBUS OPERATIONS GMBH CABIN ELECTRO	Z033H0003112
23	DEU A	AIRBUS OPERATIONS GMBH CABIN ELECTRO	Z033H0003112
23	DEU A	AIRBUS OPERATIONS GMBH CABIN ELECTRO	Z033H0003112
23	DEU B	AIRBUS OPERATIONS GMBH CABIN ELECTRO	Z043H000351A
23	DEU B	AIRBUS OPERATIONS GMBH CABIN ELECTRO	Z043H000351A
23	DEU B	AIRBUS OPERATIONS GMBH CABIN ELECTRO	Z043H000351A
23	DEU B	AIRBUS OPERATIONS GMBH CABIN ELECTRO	Z043H000351A
23	HANDSET,CABIN	HOLMBERG GMBH & CO.KG	N40-1B20215-102
23	HANDSET,CABIN	HOLMBERG GMBH & CO.KG	N40-1B20215-102
23	HANDSET,CABIN	HOLMBERG GMBH & CO.KG	N40-1B20215-102
24	BATTERY CHARGE LIMITER	THALES AVIONICS SA	35-0L5-1006-08
24	BATTERY CHARGE LIMITER	THALES AVIONICS SA	35-0L5-1006-08
24	200A SINGLE POLE CONTACTOR	ECE EQUIPEMENT	640CC04A2Y00
24	200A SINGLE POLE CONTACTOR	ECE EQUIPEMENT	640CC04A2Y00
24	TRANSFORMER RECTIFIER	TFE ELECTRONICS	Y192
24	TRANSFORMER RECTIFIER	TFE ELECTRONICS	Y192
24	TRANSFORMER RECTIFIER	TFE ELECTRONICS	Y192
24	GENERATOR CONTROL UNIT	EATON AEROSPACE VICKERS SYSTEMS AERQ	521100
24	QUICK ATTACH DETACH	HAMILTON SUNDSTRAND CORP	772896
24	QUICK ATTACH DETACH	HAMILTON SUNDSTRAND CORP	772896
24	GENERATOR CONTROL UNIT	HAMILTON SUNDSTRAND CORP	767584K
24	GENERATOR CONTROL UNIT	HAMILTON SUNDSTRAND CORP	767584K
24	BATTERY	SAFT DPT	2758
24	BATTERY	SAFT DPT	2758
24	CONTACTOR	ECE EQUIPEMENT	564CA04A21Y00
24	100A SINGLE POLE CONTACTOR	ECE EQUIPEMENT	630CC04A1Y00
24	DC.VOLTMETER	ECE EQUIPEMENT	206PN01
24	DC.VOLTMETER	ECE EQUIPEMENT	206PN01
24	100A SINGLE POLE CONTACTOR	ECE EQUIPEMENT	630CC04A1Y00

24	STATIC INVERTER	DIEHL LUFTFAHRT ELEKTRONIK GMBH	4188-01
24	DOUBLE THREE POLE CONTACTOR	ECE EQUIPEMENT	503CA04F2-02Y00
24	260A THREE POLE CONTACTOR	ECE EQUIPEMENT	558CA04A40Y00
24	260A THREE POLE CONTACTOR	ECE EQUIPEMENT	558CA04A30Y00
24	100A SINGLE POLE CONTACTOR	ECE EQUIPEMENT	630CC04A2Y00
24	200A SINGLE POLE CONTACTOR	ECE EQUIPEMENT	640CC04A2Y00
24	200A SINGLE POLE CONTACTOR	ECE EQUIPEMENT	640CC04A2Y00
24	200A SINGLE POLE CONTACTOR	ECE EQUIPEMENT	640CC04A2Y00
24	200A SINGLE POLE CONTACTOR	ECE EQUIPEMENT	640CC04A2Y00
24	100A SINGLE POLE CONTACTOR	ECE EQUIPEMENT	630CC04A1Y00
24	100A SINGLE POLE CONTACTOR	ECE EQUIPEMENT	630CC04A1Y00
24	CONST.SPEED MOTOR/GENERATOR	EATON AEROSPACE VICKERS SYSTEMS AERQ	520913
24	GEN AUXILIARY POWER UNIT	GOODRICH POWER SYSTEM	BA16501-01
24	260A THREE POLE CONTACTOR	ECE EQUIPEMENT	558CA04A30Y00
24	260A THREE POLE CONTACTOR	ECE EQUIPEMENT	558CA04A30Y00
24	100A SINGLE POLE CONTACTOR	ECE EQUIPEMENT	630CC04A0Y00
24	260A THREE POLE CONTACTOR	ECE EQUIPEMENT	558CA04A40Y00
24	260A THREE POLE CONTACTOR	ECE EQUIPEMENT	558CA04A30Y00
24	60A THREE POLE CONTACTOR	ECE EQUIPEMENT	564CA04F10Y00
24	CONTACTOR	ECE EQUIPEMENT	564CA04A10Y00
24	CNTOR MODULE	ECE EQUIPEMENT	950GC02Y00
24	CNTOR MODULE	ECE EQUIPEMENT	960GC02Y00
24	60A THREE POLE CONTACTOR	ECE EQUIPEMENT	564CA04F10Y00
24	CONTACTOR	ECE EQUIPEMENT	564CA04A10Y00
24	DOUBLE THREE POLE CONTACTOR	ECE EQUIPEMENT	503CA04F2-02Y00
24	CNTOR MODULE	ECE EQUIPEMENT	700GA01Y00
24	GROUND AND AUXILIARY CTRL UNIT	HAMILTON SUNDSTRAND CORP	1700667D
24	CONTACTOR	ECE EQUIPEMENT	564CA04A01Y00
24	CNTOR MODULE	ECE EQUIPEMENT	720GA01Y00
24	CNTOR MODULE	ECE EQUIPEMENT	730GA01Y00
24	CNTOR MODULE	ECE EQUIPEMENT	710GA01Y00
24	6 HOLE CURRENT TRANSFORMER	GOODRICH POWER SYSTEM	PC01502
24	6 HOLE CURRENT TRANSFORMER	GOODRICH POWER SYSTEM	PC01502
24	3 HOLE CURRENT TRANSFORMER	GOODRICH POWER SYSTEM	PC01801
24	3 HOLE CURRENT TRANSFORMER	GOODRICH POWER SYSTEM	PC01801
24	3 HOLE CURRENT TRANSFORMER	GOODRICH POWER SYSTEM	PC01801
24	INTEGRATED DRIVE GENERATOR	HAMILTON SUNDSTRAND CORP	1708897
24	INTEGRATED DRIVE GENERATOR	HAMILTON SUNDSTRAND CORP	1708897
25	EMERGENCY ESCAPE ROPE	AERAZUR	208724-0
25	EMERGENCY ESCAPE ROPE	AERAZUR	208724-0
25	POWERED PILOT SEAT	EADS SOGERMA	TAAI3-03PE20-01
25	POWERED COPILOT SEAT	EADS SOGERMA	TAAI3-03CE20-01
25	3RD.OCCUPANT SEAT	ZODIAC SEATS FRANCE	16800-01-00
25	EMERGENCY TRANSMITTER	KANNAD	S1821502-02
25	ELT-ANTENNA	CHELTON ANTENNAS GROUPE COBHAM	2632-82
25	PROGRAMMING DONGLE	KANNAD	S1820514-04
25	CABIN ATTENDANT SEAT	AMI INDUSTRIES GOODRICH CORPORATION	2128-75LE00ECD1
25	CABIN ATTENDANT SEAT	AMI INDUSTRIES GOODRICH CORPORATION	2128-75CE00ECD1
25	CABIN ATTENDANT SEAT	AMI INDUSTRIES GOODRICH CORPORATION	2130-15CH00FCD1
25	CABIN ATTENDANT SEAT	AMI INDUSTRIES GOODRICH CORPORATION	2127-15AD00ECD1
25	GALLEY 1	DRIESSEN AEROSPACE CZ SRO	601851-001401
25	GALLEY 5	DRIESSEN AEROSPACE CZ SRO	601857-001901

25	WATER HEATER	BE AEROSPACE INC KONINKLIJKE FABRIEK	4360004-85-0018
25	WATER HEATER	BE AEROSPACE INC KONINKLIJKE FABRIEK	4360004-85-0018
25	OVEN	BE AEROSPACE INC KONINKLIJKE FABRIEK	4333100-01-6600
25	OVEN	BE AEROSPACE INC KONINKLIJKE FABRIEK	4333100-01-6600
25	SLIDE RAFT,FWD	AIR CRUISERS CO	D30664-509
25	SLIDE RAFT,FWD	AIR CRUISERS CO	D30664-509
25	SLIDE RAFT,AFT	AIR CRUISERS CO	D30665-509
25	SLIDE RAFT,AFT	AIR CRUISERS CO	D30665-509
25	OFF-WING SLIDE LH	AIR CRUISERS CO	D31865-111
25	OFF-WING SLIDE RH	AIR CRUISERS CO	D31865-112
25	RESERVOIR ASSY	AIR CRUISERS CO	60592-201
25	RESERVOIR ASSY	AIR CRUISERS CO	60592-201
25	LIFE RAFT,25 PERS.	EASTERN AERO MARINE INC	R0372A305
25	SURVIVAL KIT	AIR CRUISERS CO	60128-303
25	SURVIVAL KIT	AIR CRUISERS CO	60128-303
25	SURVIVAL KIT	AIR CRUISERS CO	60128-303
25	SURVIVAL KIT	AIR CRUISERS CO	60128-303
25	EMERG.RADIO BEACON	KANNAD	S1823502-03
25	EMERG.RADIO BEACON	KANNAD	S1823502-03
25	PROGRAMMING DONGLE	KANNAD	S1820514-01
25	PROGRAMMING DONGLE	KANNAD	S1820514-01
26	SMOKE DETECTOR	SIEMENS SAS	CGDU2000-00
26	FIRE PANEL ENGINE APU	ECE EQUIPEMENT	335TS08Y01
26	SMOKE DETECTION SYST.	SIEMENS SAS	PPC1100-00
26	SMOKE DEFLECTION SYST.	SIEMENS SAS	PPC1200-00
26	FIRE DETECTION UNIT	L'HOTELLIER	3721-00
26	FIRE DETECTION UNIT	L'HOTELLIER	3721-00
26	SMOKE DETECTION SYST.	SIEMENS SAS	PPC1100-00
26	PYLON FIRE DETECTOR	L'HOTELLIER	12134-00
26	PYLON FIRE DETECTOR	L'HOTELLIER	12134-00
26	SMOKE DETECTION SYST.	SIEMENS SAS	PPC1100-00
26	PYLON FIRE DETECTOR	L'HOTELLIER	12134-00
26	PYLON FIRE DETECTOR	L'HOTELLIER	12134-00
26	SMOKE DETECTION SYST.	SIEMENS SAS	PPC1100-00
26	SMOKE DEFLECTION SYST.	SIEMENS SAS	PPC1200-00
26	CARTRIDGE	MEGGIT SAFETY SYST INC HTL/KIN-TECH	30903886
26	CARTRIDGE	MEGGIT SAFETY SYST INC HTL/KIN-TECH	30903886
26	SMOKE DETECTION SYST.	SIEMENS SAS	PPC1100-00
26	SMOKE DEFLECTION SYST.	SIEMENS SAS	PPC1200-00
26	ENGINE FIRE EXTINGUISHER	MEGGIT SAFETY SYST INC HTL/KIN-TECH	34100005-1
26	ENGINE FIRE EXTINGUISHER	MEGGIT SAFETY SYST INC HTL/KIN-TECH	34100005-1
26	SMOKE DETECTION SYST.	SIEMENS SAS	PPC1100-00
26	CARTRIDGE	MEGGIT SAFETY SYST INC HTL/KIN-TECH	30903886
26	CARTRIDGE	MEGGIT SAFETY SYST INC HTL/KIN-TECH	30903886
26	ENGINE FIRE EXTINGUISHER	MEGGIT SAFETY SYST INC HTL/KIN-TECH	34100005-1
26	ENGINE FIRE EXTINGUISHER	MEGGIT SAFETY SYST INC HTL/KIN-TECH	34100005-1
26	FIRE EXTINGUISHER	MEGGIT SAFETY SYST INC HTL/KIN-TECH	33600005-3
26	CARTRIDGE	MEGGIT SAFETY SYST INC HTL/KIN-TECH	30903827
26	FIRE DETECTION UNIT	L'HOTELLIER	3721-00
26	FIRE/OVHT DETECTOR	MEGGITT SAFETY SYSTEMS INC	4550-01
26	FIRE/OVHT DETECTOR	MEGGITT SAFETY SYSTEMS INC	4550-01
26	FIRE EXTINGUISHER	TOTAL FEUERSCHUTZ GMBH	74-20

26	FIRE EXTINGUISH.CARGO	MEGGIT SAFETY SYST INC HTL/KIN-TECH	34600017
26	CARTRIDGE	MEGGIT SAFETY SYST INC HTL/KIN-TECH	30900000M
26	CARTRIDGE	MEGGIT SAFETY SYST INC HTL/KIN-TECH	30900000M
26	FIRE EXTINGUISH.CARGO	MEGGIT SAFETY SYST INC HTL/KIN-TECH	34600017
26	CARTRIDGE	MEGGIT SAFETY SYST INC HTL/KIN-TECH	30900000M
26	CARTRIDGE	MEGGIT SAFETY SYST INC HTL/KIN-TECH	30900000M
26	FILTER,HALON	PALL AEROSPACE	QA06753-03
26	FILTER,HALON	PALL AEROSPACE	QA06753-03
26	PRESSURE REDUCER	B/E AEROSPACE SYSTEMS GMBH	E61751-00-0002
26	PRESSURE REDUCER	B/E AEROSPACE SYSTEMS GMBH	E61751-00-0002
26	VALVE,CHECK	EATON LIMITED	HTE400115
26	VALVE,CHECK	EATON LIMITED	HTE400115
26	FIRE EXTINGUISHER	TOTAL FEUERSCHUTZ GMBH	74-20
26	FIRE EXTINGUISHER	TOTAL FEUERSCHUTZ GMBH	74-20
26	FIRE EXTINGUISHER	TOTAL FEUERSCHUTZ GMBH	74-20
26	FIRE EXTINGUISHER	FIRE FIGHTING ENTERPRISES LTD	BA24320A1
26	FIRE EXTINGUISHER	FIRE FIGHTING ENTERPRISES LTD	BA24320A1
26	FIRE EXTINGUISHER	FIRE FIGHTING ENTERPRISES LTD	BA24320A1
27	SPOILER ELEVATOR COMPUTER	THALES AVIONICS SA	B372CAM0100
27	SEC C OPERATIONAL SOFTWARE	THALES AVIONICS SA	B372CAM0103
27	SPOILER ELEVATOR COMPUTER	THALES AVIONICS SA	B372CAM0100
27	SEC C OPERATIONAL SOFTWARE	THALES AVIONICS SA	B372CAM0103
27	SPOILER ELEVATOR COMPUTER	THALES AVIONICS SA	B372CAM0100
27	SEC C OPERATIONAL SOFTWARE	THALES AVIONICS SA	B372CAM0103
27	TRANSDUCER UNIT	SKF AEROSPACE FRANCE	322000M02
27	ELEVATOR AILERON COMPUTER	THALES AVIONICS SA	3945129100
27	ELEVATOR AILERON COMPUTER	THALES AVIONICS SA	3945129108
27	ELEVATOR AILERON COMPUTER	THALES AVIONICS SA	3945129100
27	ELEVATOR AILERON COMPUTER	THALES AVIONICS SA	3945129108
27	YAW DAMPER SERVOACTUATOR	GOODRICH ACTUATION SYSTEM SAS	SC4700-5
27	YAW DAMPER SERVOACTUATOR	GOODRICH ACTUATION SYSTEM SAS	SC4700-5
27	FLT CTL DATA CONCENTRATOR	LITEF "LITTON TECHNISCHE"	115370-1521
27	FLT CTL DATA CONCENTRATOR	LITEF "LITTON TECHNISCHE"	115370-1521
27	TRAVEL LIMITATION UNIT	PACIFIC SCIENTIFIC ARTUS	DV8456701-5
27	SPD.BRK.CTL.TRANSDUCER UNIT	SKF AEROSPACE FRANCE	321200M02
27	ACTUATOR-THS	GOODRICH ACTUATION SYSTEMS (TRW SYST	47145-168
27	RUDDER TRIM ACTUATOR	SAGEM DEFENSE SECURITE SA	6137-5
27	ACCELEROMETER	THALES AVIONICS SA	J172ABM01
27	ACCELEROMETER	THALES AVIONICS SA	J172ABM01
27	ACCELEROMETER	THALES AVIONICS SA	J172ABM01
27	ACCELEROMETER	THALES AVIONICS SA	J172ABM01
27	SLAT/FLAP CONTR.COMP	DIEHL AEROSPACE GMBH	200301E00000308
27	SLAT/FLAP CONTR.COMP	DIEHL AEROSPACE GMBH	200301E00000308
27	TRANSDUCER UNIT	SKF AEROSPACE FRANCE	342300M01
27	TRANSDUCER UNIT	SKF AEROSPACE FRANCE	342300M01
27	POS.PICK OFF UNIT	LIEBHERR AEROSPACE LINDENBERG GMBH	9028A0004-01
27	POS.PICK OFF UNIT	LIEBHERR AEROSPACE LINDENBERG GMBH	9028A0004-01
27	INBD.SPOILER SERVOCONTROL	GOODRICH ACTUATION SYSTEMS (TRW SYST	31077-211
27	INBD.SPOILER SERVOCONTROL	GOODRICH ACTUATION SYSTEMS (TRW SYST	31077-211
27	INBD.SPOILER SERVOCONTROL	GOODRICH ACTUATION SYSTEMS (TRW SYST	31077-211
27	INBD.SPOILER SERVOCONTROL	GOODRICH ACTUATION SYSTEMS (TRW SYST	31077-211
27	INBD.SPOILER SERVOCONTROL	GOODRICH ACTUATION SYSTEMS (TRW SYST	31077-211
27	INBD.SPOILER SERVOCONTROL	GOODRICH ACTUATION SYSTEMS (TRW SYST	31077-211

27	INBD.SPOILER SERVOCONTROL	GOODRICH ACTUATION SYSTEMS (TRW SYST	31077-211
27	INBD.SPOILER SERVOCONTROL	GOODRICH ACTUATION SYSTEMS (TRW SYST	31077-211
27	INBD.SPOILER SERVOCONTROL	GOODRICH ACTUATION SYSTEMS (TRW SYST	31077-211
27	INBD.SPOILER SERVOCONTROL	GOODRICH ACTUATION SYSTEMS (TRW SYST	31077-211
27	POS.PICK OFF UNIT	LIEBHERR AEROSPACE LINDENBERG GMBH	9028A0004-01
27	POS.PICK OFF UNIT	LIEBHERR AEROSPACE LINDENBERG GMBH	9028A0004-01
27	AILERON SERVOCONTROL	GOODRICH ACTUATION SYSTEMS (TRW SYST	31073-110
27	AILERON SERVOCONTROL	GOODRICH ACTUATION SYSTEMS (TRW SYST	31073-110
27	AILERON SERVOCONTROL	GOODRICH ACTUATION SYSTEMS (TRW SYST	31073-110
27	AILERON SERVOCONTROL	GOODRICH ACTUATION SYSTEMS (TRW SYST	31073-110
27	WING TIP BRAKE	LIEBHERR AEROSPACE LINDENBERG GMBH	831C0000-02
27	ELEVATOR SERVOCONTROL	GOODRICH ACTUATION SYSTEMS (TRW SYST	31075-840
27	ELEVATOR SERVOCONTROL	GOODRICH ACTUATION SYSTEMS (TRW SYST	31075-840
27	ELEVATOR SERVOCONTROL	GOODRICH ACTUATION SYSTEMS (TRW SYST	31075-840
27	ELEVATOR SERVOCONTROL	GOODRICH ACTUATION SYSTEMS (TRW SYST	31075-840
27	WING TIP BRAKE	LIEBHERR AEROSPACE LINDENBERG GMBH	831C0000-02
27	WING TIP BRAKE	LIEBHERR AEROSPACE LINDENBERG GMBH	831C0000-02
27	WING TIP BRAKE	LIEBHERR AEROSPACE LINDENBERG GMBH	831C0000-02
27	TRANSDUCER UNIT	SKF AEROSPACE FRANCE	322000M02
27	PWR SUPPLY DECOUPLING UNIT	ECE EQUIPEMENT	530AL01CN
27	PWR SUPPLY DECOUPLING UNIT	ECE EQUIPEMENT	530AL01CN
27	TRANSDUCER UNIT	SKF AEROSPACE FRANCE	342300M01
27	TRANSDUCER UNIT	SKF AEROSPACE FRANCE	342300M01
27	COMMAND SENSOR UNIT	DIEHL AEROSPACE GMBH	065-50001-0200
27	FORCE TRANSDUCER UNIT	SKF AEROSPACE FRANCE	327000-102M01
27	SIDE-STICK UNIT FOR CAPTAIN	RATIER-FIGEAC SA	FE412000104
27	SIDE STICK UNIT FOR F/O	RATIER-FIGEAC SA	FE412000105
27	CABLE TENSION REGULATOR	RATIER-FIGEAC SA	FE171-000
27	RUDDER SERVOCONTROL	LIEBHERR AEROSPACE LINDENBERG GMBH	810D0000-01
27	RUDDER SERVOCONTROL	LIEBHERR AEROSPACE LINDENBERG GMBH	810D0000-01
27	RUDDER SERVOCONTROL	LIEBHERR AEROSPACE LINDENBERG GMBH	810D0000-01
27	POWER CONTROL UNIT	LIEBHERR AEROSPACE LINDENBERG GMBH	786A0000-13
27	SHAFT	LIEBHERR AEROSPACE LINDENBERG GMBH	833B0500-01
27	BEVEL GEARBOX 19 DEG.	LIEBHERR AEROSPACE LINDENBERG GMBH	790A0000-02
27	SHAFT COMPL.	LIEBHERR AEROSPACE LINDENBERG GMBH	833B2200-01
27	GEARBOX,T-	LIEBHERR AEROSPACE LINDENBERG GMBH	827A0000-02
27	SHAFT ASSY	LIEBHERR AEROSPACE LINDENBERG GMBH	833B1000-01
27	STEADY BEARING ASSY	LIEBHERR AEROSPACE LINDENBERG GMBH	801C1700-02
27	SHAFT COMPL.	LIEBHERR AEROSPACE LINDENBERG GMBH	833C0900-01
27	BEVEL GEARBOX 63,5DEG	LIEBHERR AEROSPACE LINDENBERG GMBH	828A0000-02
27	SHAFT ASSY	LIEBHERR AEROSPACE LINDENBERG GMBH	833A2100-01
27	BEVEL GEARBOX 63,5DEG	LIEBHERR AEROSPACE LINDENBERG GMBH	828A0000-02
27	SHAFT ASSY	LIEBHERR AEROSPACE LINDENBERG GMBH	833A0600-01
27	ACTUATOR	LIEBHERR AEROSPACE LINDENBERG GMBH	829D0000-01
27	SHAFT ASSY	LIEBHERR AEROSPACE LINDENBERG GMBH	833A2000-01
27	ACTUATOR	LIEBHERR AEROSPACE LINDENBERG GMBH	829D0000-01
27	SHAFT ASSY	LIEBHERR AEROSPACE LINDENBERG GMBH	833B1100-01
27	STEADY BEARING ASSY	LIEBHERR AEROSPACE LINDENBERG GMBH	801C1700-02
27	SHAFT ASSY	LIEBHERR AEROSPACE LINDENBERG GMBH	833B0100-01
27	STEADY BEARING ASSY	LIEBHERR AEROSPACE LINDENBERG GMBH	801C1700-02
27	SHAFT ASSY	LIEBHERR AEROSPACE LINDENBERG GMBH	833B0400-01

27	STEADY BEARING ASSY	LIEBHERR AEROSPACE LINDENBERG GMBH	833C5200-02
27	SHAFT ASSY	LIEBHERR AEROSPACE LINDENBERG GMBH	833B0200-01
27	STEADY BEARING ASSY	LIEBHERR AEROSPACE LINDENBERG GMBH	801C1700-02
27	SHAFT ASSY	LIEBHERR AEROSPACE LINDENBERG GMBH	833B0300-01
27	STEADY BEARING ASSY	LIEBHERR AEROSPACE LINDENBERG GMBH	833C2300-02
27	SHAFT ASSY	LIEBHERR AEROSPACE LINDENBERG GMBH	833C1200-01
27	ACTUATOR	LIEBHERR AEROSPACE LINDENBERG GMBH	830D0000-01
27	SHAFT ASSY	LIEBHERR AEROSPACE LINDENBERG GMBH	833A1900-01
27	ACTUATOR	LIEBHERR AEROSPACE LINDENBERG GMBH	830D0000-01
27	SHAFT ASSY	LIEBHERR AEROSPACE LINDENBERG GMBH	833C1300-01
27	STEADY BEARING ASSY	LIEBHERR AEROSPACE LINDENBERG GMBH	801C1700-02
27	SHAFT ASSY	LIEBHERR AEROSPACE LINDENBERG GMBH	833B0800-01
27	ACTUATOR	LIEBHERR AEROSPACE LINDENBERG GMBH	830D0000-01
27	SHAFT ASSY	LIEBHERR AEROSPACE LINDENBERG GMBH	833A0700-01
27	ACTUATOR	LIEBHERR AEROSPACE LINDENBERG GMBH	830D0000-01
27	SHAFT ASSY	LIEBHERR AEROSPACE LINDENBERG GMBH	833A1800-01
27	ACTUATOR	LIEBHERR AEROSPACE LINDENBERG GMBH	830D0000-01
27	SHAFT ASSY	LIEBHERR AEROSPACE LINDENBERG GMBH	833A1700-01
27	ACTUATOR	LIEBHERR AEROSPACE LINDENBERG GMBH	830D0000-01
27	SHAFT ASSY	LIEBHERR AEROSPACE LINDENBERG GMBH	833A1600-01
27	ACTUATOR	LIEBHERR AEROSPACE LINDENBERG GMBH	830D0000-01
27	SHAFT ASSY	LIEBHERR AEROSPACE LINDENBERG GMBH	833A1500-01
27	SHAFT ASSY	LIEBHERR AEROSPACE LINDENBERG GMBH	833A1400-01
27	ACTUATOR	LIEBHERR AEROSPACE LINDENBERG GMBH	830D0000-01
27	DRIVE SHAFT	LIEBHERR AEROSPACE LINDENBERG GMBH	833A2400-02
27	ADAPTER PPU-ASSY	LIEBHERR AEROSPACE LINDENBERG GMBH	521B0200-01
27	SHAFT ASSY	LIEBHERR AEROSPACE LINDENBERG GMBH	833B1000-01
27	STEADY BEARING ASSY	LIEBHERR AEROSPACE LINDENBERG GMBH	801C1700-02
27	SHAFT COMPL.	LIEBHERR AEROSPACE LINDENBERG GMBH	833C0900-01
27	BEVEL GEARBOX 63,5DEG	LIEBHERR AEROSPACE LINDENBERG GMBH	828A0000-02
27	SHAFT ASSY	LIEBHERR AEROSPACE LINDENBERG GMBH	833A2100-01
27	BEVEL GEARBOX 63,5DEG	LIEBHERR AEROSPACE LINDENBERG GMBH	828A0000-02
27	SHAFT ASSY	LIEBHERR AEROSPACE LINDENBERG GMBH	833A0600-01
27	ACTUATOR	LIEBHERR AEROSPACE LINDENBERG GMBH	829D0000-01
27	SHAFT ASSY	LIEBHERR AEROSPACE LINDENBERG GMBH	833A2000-01
27	ACTUATOR	LIEBHERR AEROSPACE LINDENBERG GMBH	829D0000-01
27	SHAFT ASSY	LIEBHERR AEROSPACE LINDENBERG GMBH	833B1100-01
27	STEADY BEARING ASSY	LIEBHERR AEROSPACE LINDENBERG GMBH	801C1700-02
27	SHAFT ASSY	LIEBHERR AEROSPACE LINDENBERG GMBH	833B0100-01
27	STEADY BEARING ASSY	LIEBHERR AEROSPACE LINDENBERG GMBH	801C1700-02
27	SHAFT ASSY	LIEBHERR AEROSPACE LINDENBERG GMBH	833B0400-01
27	STEADY BEARING ASSY	LIEBHERR AEROSPACE LINDENBERG GMBH	833C5200-02
27	SHAFT ASSY	LIEBHERR AEROSPACE LINDENBERG GMBH	833B0200-01
27	STEADY BEARING ASSY	LIEBHERR AEROSPACE LINDENBERG GMBH	801C1700-02
27	SHAFT ASSY	LIEBHERR AEROSPACE LINDENBERG GMBH	833B0300-01
27	STEADY BEARING ASSY	LIEBHERR AEROSPACE LINDENBERG GMBH	833C2300-02
27	SHAFT ASSY	LIEBHERR AEROSPACE LINDENBERG GMBH	833C1200-01
27	ACTUATOR	LIEBHERR AEROSPACE LINDENBERG GMBH	830D0000-01
27	SHAFT ASSY	LIEBHERR AEROSPACE LINDENBERG GMBH	833A1900-01
27	ACTUATOR	LIEBHERR AEROSPACE LINDENBERG GMBH	830D0000-01

27	SHAFT ASSY	LIEBHERR AEROSPACE LINDENBERG GMBH	833C1300-01
27	STEADY BEARING ASSY	LIEBHERR AEROSPACE LINDENBERG GMBH	801C1700-02
27	SHAFT ASSY	LIEBHERR AEROSPACE LINDENBERG GMBH	833B0800-01
27	ACTUATOR	LIEBHERR AEROSPACE LINDENBERG GMBH	830D0000-01
27	SHAFT ASSY	LIEBHERR AEROSPACE LINDENBERG GMBH	833A0700-01
27	ACTUATOR	LIEBHERR AEROSPACE LINDENBERG GMBH	830D0000-01
27	SHAFT ASSY	LIEBHERR AEROSPACE LINDENBERG GMBH	833A1800-01
27	ACTUATOR	LIEBHERR AEROSPACE LINDENBERG GMBH	830D0000-01
27	SHAFT ASSY	LIEBHERR AEROSPACE LINDENBERG GMBH	833A1700-01
27	ACTUATOR	LIEBHERR AEROSPACE LINDENBERG GMBH	830D0000-01
27	SHAFT ASSY	LIEBHERR AEROSPACE LINDENBERG GMBH	833A1600-01
27	ACTUATOR	LIEBHERR AEROSPACE LINDENBERG GMBH	830D0000-01
27	SHAFT ASSY	LIEBHERR AEROSPACE LINDENBERG GMBH	833A1500-01
27	SHAFT ASSY	LIEBHERR AEROSPACE LINDENBERG GMBH	833A1400-01
27	ACTUATOR	LIEBHERR AEROSPACE LINDENBERG GMBH	830D0000-01
27	DRIVE SHAFT	LIEBHERR AEROSPACE LINDENBERG GMBH	833A2400-02
27	ADAPTER PPU-ASSY	LIEBHERR AEROSPACE LINDENBERG GMBH	521B0200-01
27	POWER CONTROL UNIT	LIEBHERR AEROSPACE LINDENBERG GMBH	786A0000-13
27	SHAFT ASSY	LIEBHERR AEROSPACE LINDENBERG GMBH	801B4600-02
27	RIGHT ANGLE GEARBOX	LIEBHERR AEROSPACE LINDENBERG GMBH	788A0000-02
27	SHAFT ASSY	LIEBHERR AEROSPACE LINDENBERG GMBH	801B4400-01
27	ACTUATOR-FLAP,NR.1	LIEBHERR AEROSPACE LINDENBERG GMBH	791C0000-02
27	SHAFT ASSY	LIEBHERR AEROSPACE LINDENBERG GMBH	801A0200-01
27	STEADY BEARING ASSY	LIEBHERR AEROSPACE LINDENBERG GMBH	801C1900-02
27	SHAFT ASSY	LIEBHERR AEROSPACE LINDENBERG GMBH	801A0300-01
27	LINE GEARBOX	LIEBHERR AEROSPACE LINDENBERG GMBH	789A0000-02
27	SHAFT ASSY	LIEBHERR AEROSPACE LINDENBERG GMBH	801A0800-01
27	ACTUATOR-FLAP, NR.2	LIEBHERR AEROSPACE LINDENBERG GMBH	792D0000-02
27	SHAFT ASSY	LIEBHERR AEROSPACE LINDENBERG GMBH	801A1500-01
27	STEADY BEARING ASSY	LIEBHERR AEROSPACE LINDENBERG GMBH	801C1900-02
27	SHAFT ASSY	LIEBHERR AEROSPACE LINDENBERG GMBH	801B0400-01
27	STEADY BEARING ASSY	LIEBHERR AEROSPACE LINDENBERG GMBH	801C1700-02
27	SHAFT ASSY	LIEBHERR AEROSPACE LINDENBERG GMBH	801C1400-01
27	BEVEL GEARBOX 19 DEG.	LIEBHERR AEROSPACE LINDENBERG GMBH	790A0000-02
27	SHAFT ASSY	LIEBHERR AEROSPACE LINDENBERG GMBH	801B0700-01
27	STEADY BEARING ASSY	LIEBHERR AEROSPACE LINDENBERG GMBH	801C1700-02
27	SHAFT ASSY	LIEBHERR AEROSPACE LINDENBERG GMBH	801B0500-01
27	ACTUATOR-FLAP, NR.3	LIEBHERR AEROSPACE LINDENBERG GMBH	793C0000-02
27	SHAFT ASSY	LIEBHERR AEROSPACE LINDENBERG GMBH	801B0600-01
27	STEADY BEARING ASSY	LIEBHERR AEROSPACE LINDENBERG GMBH	801C1700-02
27	SHAFT ASSY	LIEBHERR AEROSPACE LINDENBERG GMBH	801B4700-01
27	STEADY BEARING ASSY	LIEBHERR AEROSPACE LINDENBERG GMBH	801C1700-02
27	SHAFT ASSY	LIEBHERR AEROSPACE LINDENBERG GMBH	801B1200-01
27	SHAFT ASSY	LIEBHERR AEROSPACE LINDENBERG GMBH	801B1600-01
27	STEADY BEARING ASSY	LIEBHERR AEROSPACE LINDENBERG GMBH	801C1700-02
27	SHAFT ASSY	LIEBHERR AEROSPACE LINDENBERG GMBH	801B4800-01
27	STEADY BEARING ASSY	LIEBHERR AEROSPACE LINDENBERG GMBH	801C1700-02
27	SHAFT ASSY	LIEBHERR AEROSPACE LINDENBERG GMBH	801B1300-01
27	ACTUATOR-FLAP, NR.4	LIEBHERR AEROSPACE LINDENBERG GMBH	794C0000-02
27	SHAFT ASSY	LIEBHERR AEROSPACE LINDENBERG GMBH	801B4600-02
27	RIGHT ANGLE GEARBOX	LIEBHERR AEROSPACE LINDENBERG GMBH	788A0000-02

27	SHAFT ASSY	LIEBHERR AEROSPACE LINDENBERG GMBH	801B4400-01
27	ACTUATOR-FLAP,NR.1	LIEBHERR AEROSPACE LINDENBERG GMBH	791C0000-02
27	SHAFT ASSY	LIEBHERR AEROSPACE LINDENBERG GMBH	801A0200-01
27	STEADY BEARING ASSY	LIEBHERR AEROSPACE LINDENBERG GMBH	801C1900-02
27	SHAFT ASSY	LIEBHERR AEROSPACE LINDENBERG GMBH	801A0300-01
27	LINE GEARBOX	LIEBHERR AEROSPACE LINDENBERG GMBH	789A0000-02
27	SHAFT ASSY	LIEBHERR AEROSPACE LINDENBERG GMBH	801A0800-01
27	ACTUATOR-FLAP, NR.2	LIEBHERR AEROSPACE LINDENBERG GMBH	792D0000-02
27	SHAFT ASSY	LIEBHERR AEROSPACE LINDENBERG GMBH	801A1500-01
27	STEADY BEARING ASSY	LIEBHERR AEROSPACE LINDENBERG GMBH	801C1900-02
27	SHAFT ASSY	LIEBHERR AEROSPACE LINDENBERG GMBH	801B0400-01
27	STEADY BEARING ASSY	LIEBHERR AEROSPACE LINDENBERG GMBH	801C1700-02
27	SHAFT ASSY	LIEBHERR AEROSPACE LINDENBERG GMBH	801C1400-01
27	BEVEL GEARBOX 19 DEG.	LIEBHERR AEROSPACE LINDENBERG GMBH	790A0000-02
27	SHAFT ASSY	LIEBHERR AEROSPACE LINDENBERG GMBH	801B0700-01
27	STEADY BEARING ASSY	LIEBHERR AEROSPACE LINDENBERG GMBH	801C1700-02
27	SHAFT ASSY	LIEBHERR AEROSPACE LINDENBERG GMBH	801B0500-01
27	ACTUATOR-FLAP, NR.3	LIEBHERR AEROSPACE LINDENBERG GMBH	793C0000-02
27	SHAFT ASSY	LIEBHERR AEROSPACE LINDENBERG GMBH	801B0600-01
27	STEADY BEARING ASSY	LIEBHERR AEROSPACE LINDENBERG GMBH	801C1700-02
27	SHAFT ASSY	LIEBHERR AEROSPACE LINDENBERG GMBH	801B4700-01
27	STEADY BEARING ASSY	LIEBHERR AEROSPACE LINDENBERG GMBH	801C1700-02
27	SHAFT ASSY	LIEBHERR AEROSPACE LINDENBERG GMBH	801B1200-01
27	SHAFT ASSY	LIEBHERR AEROSPACE LINDENBERG GMBH	801B1600-01
27	STEADY BEARING ASSY	LIEBHERR AEROSPACE LINDENBERG GMBH	801C1700-02
27	SHAFT ASSY	LIEBHERR AEROSPACE LINDENBERG GMBH	801B4800-01
27	STEADY BEARING ASSY	LIEBHERR AEROSPACE LINDENBERG GMBH	801C1700-02
27	SHAFT ASSY	LIEBHERR AEROSPACE LINDENBERG GMBH	801B1300-01
27	ACTUATOR-FLAP, NR.4	LIEBHERR AEROSPACE LINDENBERG GMBH	794C0000-02
28	FUEL PUMP CANISTER	EATON LIMITED	568-1-27244-003
28	FUEL PUMP CANISTER	EATON LIMITED	568-1-27203-003
28	ACTUAT.-LP FUEL S.APU	SITEC AEROSPACE GMBH	A08000
28	FUEL PUMP CANISTER	EATON LIMITED	568-1-27203-003
28	FQI COMPUTER	ONTIC ENGINEERING & MANUFACTURING UK	SIC5059-14-20
28	PUMP,APU FUEL	TRW LUCAS AEROSPACE FMS	C12CB0013
28	FUEL PUMP CANISTER	EATON LIMITED	568-1-27244-003
28	TWIN MOTOR ACTUATOR	HIGH TEMPERATURE ENGINEERS LTD	HTE190001-2
28	REFUEL PRESELECTOR	ONTIC ENGINEERING & MANUFACTURING UK	796815-02-03
28	FUEL QUANTITY INDICATOR	ONTIC ENGINEERING & MANUFACTURING UK	1407KID02-03
28	APU FUEL PRESS.SWITCH	EATON LIMITED	FRH100013A
28	CONTROL UNIT-LEVEL SENSING	SIMMONDS PRECISION PRODUCTS BFGOODRI	30042-0601
28	REFUEL VALVE	EATON LIMITED	1158000-45
28	REFUEL VALVE	EATON LIMITED	1158000-45
28	TWIN MOTOR ACTUATOR	HIGH TEMPERATURE ENGINEERS LTD	HTE190001-2
28	CONTROL UNIT-LEVEL SENSING	SIMMONDS PRECISION PRODUCTS BFGOODRI	30042-0601
28	CANISTER,PUMP FUEL	TRW LUCAS AEROSPACE FMS	C49AA0222
28	FUEL TRANSFER VALVE ACTUATOR	HIGH TEMPERATURE ENGINEERS LTD	HTE200002-1
28	TWIN MOTOR ACTUATOR	HIGH TEMPERATURE ENGINEERS LTD	HTE190001-2
28	FUEL TRANSFER VALVE	HIGH TEMPERATURE ENGINEERS LTD	HTE900135
28	FUEL TRANSFER VALVE ACTUATOR	HIGH TEMPERATURE ENGINEERS LTD	HTE200002-1
28	REFUEL VALVE	EATON LIMITED	1158000-45

28	FUEL TRANSFER VALVE ACTUATOR	HIGH TEMPERATURE ENGINEERS LTD	HTE200002-1
28	FUEL DEFUEL/TRANSFER VALVE	HIGH TEMPERATURE ENGINEERS LTD	HTE900133
28	FUEL TRANSFER VALVE ACTUATOR	HIGH TEMPERATURE ENGINEERS LTD	HTE200002-1
28	FUEL TRANSFER VALVE ACTUATOR	HIGH TEMPERATURE ENGINEERS LTD	HTE200002-1
28	FUEL TRANSFER VALVE ACTUATOR	HIGH TEMPERATURE ENGINEERS LTD	HTE200002-1
28	LOW PRESSURE FUEL VALVE	HIGH TEMPERATURE ENGINEERS LTD	HTE900118-001
28	FUEL TRANSFER VALVE ACTUATOR	HIGH TEMPERATURE ENGINEERS LTD	HTE200002-1
28	LOW PRESSURE FUEL VALVE	HIGH TEMPERATURE ENGINEERS LTD	HTE900118-001
28	VALVE,FUEL	SITEC AEROSPACE GMBH	20700-300
28	SENSOR-FUEL LEVEL	SIMMONDS PRECISION PRODUCTS BFGOODRI	3530000-1
28	SENSOR-FUEL LEVEL	SIMMONDS PRECISION PRODUCTS BFGOODRI	3530000-1
28	FLOAT VENT VALVE	EATON AEROSPACE	9508175
28	SENSOR-FUEL LEVEL	SIMMONDS PRECISION PRODUCTS BFGOODRI	3530000-1
28	SENSOR-FUEL LEVEL	SIMMONDS PRECISION PRODUCTS BFGOODRI	3530000-1
28	FLOAT VENT VALVE	EATON AEROSPACE	9508175
28	SENSOR-FUEL LEVEL	SIMMONDS PRECISION PRODUCTS BFGOODRI	3530000-1
28	SENSOR-FUEL LEVEL	SIMMONDS PRECISION PRODUCTS BFGOODRI	3530000-1
28	FLOAT VENT VALVE	EATON AEROSPACE	9508175
28	FLOAT VENT VALVE	EATON AEROSPACE	9508175
28	FUEL CADENSICON	ONTIC ENGINEERING & MANUFACTURING UK	796-809-6A
28	FUEL CADENSICON	ONTIC ENGINEERING & MANUFACTURING UK	796-809-6A
28	SENSOR-FUEL LEVEL	SIMMONDS PRECISION PRODUCTS BFGOODRI	3530000-1
28	FUEL CADENSICON	ONTIC ENGINEERING & MANUFACTURING UK	796-809-6A
28	FUEL PUMP	EATON LIMITED	568-1-27202-007
28	SENSOR-FUEL LEVEL	SIMMONDS PRECISION PRODUCTS BFGOODRI	3530000-1
28	WING TANK PROBE, FQI	ONTIC ENGINEERING & MANUFACTURING UK	0212KTU01
28	WING TANK PROBE, FQI	ONTIC ENGINEERING & MANUFACTURING UK	0212KTU01
28	FUEL PUMP	EATON LIMITED	568-1-27202-007
28	SENSOR-FUEL LEVEL	SIMMONDS PRECISION PRODUCTS BFGOODRI	3530000-1
28	WING TANK PROBE, FQI	ONTIC ENGINEERING & MANUFACTURING UK	0212KTU16
28	WING TANK PROBE, FQI	ONTIC ENGINEERING & MANUFACTURING UK	0212KTU16
28	SENSOR-FUEL LEVEL	SIMMONDS PRECISION PRODUCTS BFGOODRI	3530000-1
28	SENSOR-FUEL LEVEL	SIMMONDS PRECISION PRODUCTS BFGOODRI	3530000-1
28	WING TANK PROBE, FQI	ONTIC ENGINEERING & MANUFACTURING UK	0212KTU03
28	WING TANK PROBE, FQI	ONTIC ENGINEERING & MANUFACTURING UK	0212KTU03
28	SENSOR-FUEL LEVEL	SIMMONDS PRECISION PRODUCTS BFGOODRI	3530000-1
28	SENSOR-FUEL LEVEL	SIMMONDS PRECISION PRODUCTS BFGOODRI	3530000-1
28	WING TANK PROBE, FQI	ONTIC ENGINEERING & MANUFACTURING UK	0212KTU04
28	WING TANK PROBE, FQI	ONTIC ENGINEERING & MANUFACTURING UK	0212KTU04
28	FUEL PUMP	EATON LIMITED	568-1-27202-007
28	SENSOR-FUEL LEVEL	SIMMONDS PRECISION PRODUCTS BFGOODRI	3530000-1
28	SENSOR-FUEL LEVEL	SIMMONDS PRECISION PRODUCTS BFGOODRI	3530000-1
28	WING TANK PROBE, FQI	ONTIC ENGINEERING & MANUFACTURING UK	0212KTU05
28	WING TANK PROBE, FQI	ONTIC ENGINEERING & MANUFACTURING UK	0212KTU05
28	FUEL PUMP	EATON LIMITED	568-1-27202-007
28	SENSOR-FUEL LEVEL	SIMMONDS PRECISION PRODUCTS BFGOODRI	3530000-1
28	SENSOR-FUEL LEVEL	SIMMONDS PRECISION PRODUCTS BFGOODRI	3530000-1
28	WING TANK PROBE, FQI	ONTIC ENGINEERING & MANUFACTURING UK	0212KTU06
28	WING TANK PROBE, FQI	ONTIC ENGINEERING & MANUFACTURING UK	0212KTU06
28	SENSOR-FUEL LEVEL	SIMMONDS PRECISION PRODUCTS BFGOODRI	3530000-1
28	SENSOR-FUEL LEVEL	SIMMONDS PRECISION PRODUCTS BFGOODRI	3530000-1
28	FUEL TRANSFER VALVE	HIGH TEMPERATURE ENGINEERS LTD	HTE900087-001

28	WING TANK PROBE, FQI	ONTIC ENGINEERING & MANUFACTURING UK	0212KTU07
28	WING TANK PROBE, FQI	ONTIC ENGINEERING & MANUFACTURING UK	0212KTU07
28	SENSOR-FUEL LEVEL	SIMMONDS PRECISION PRODUCTS BFGOODRI	3530000-1
28	SENSOR-FUEL LEVEL	SIMMONDS PRECISION PRODUCTS BFGOODRI	3530000-1
28	FUEL TRANSFER VALVE	HIGH TEMPERATURE ENGINEERS LTD	HTE900087-001
28	WING TANK PROBE, FQI	ONTIC ENGINEERING & MANUFACTURING UK	0212KTU08
28	WING TANK PROBE, FQI	ONTIC ENGINEERING & MANUFACTURING UK	0212KTU08
28	TEMPERATURE SENSOR	EATON LIMITED	68-0008
28	TEMPERATURE SENSOR	EATON LIMITED	68-0008
28	FUEL TRANSFER VALVE	HIGH TEMPERATURE ENGINEERS LTD	HTE900087-001
28	WING TANK PROBE, FQI	ONTIC ENGINEERING & MANUFACTURING UK	0212KTU09
28	WING TANK PROBE, FQI	ONTIC ENGINEERING & MANUFACTURING UK	0212KTU09
28	TEMPERATURE SENSOR	EATON LIMITED	68-0008
28	TEMPERATURE SENSOR	EATON LIMITED	68-0008
28	FUEL TRANSFER VALVE	HIGH TEMPERATURE ENGINEERS LTD	HTE900087-001
28	WING TANK PROBE, FQI	ONTIC ENGINEERING & MANUFACTURING UK	0212KTU09
28	WING TANK PROBE, FQI	ONTIC ENGINEERING & MANUFACTURING UK	0212KTU09
28	WING TANK PROBE, FQI	ONTIC ENGINEERING & MANUFACTURING UK	0212KTU10
28	WING TANK PROBE, FQI	ONTIC ENGINEERING & MANUFACTURING UK	0212KTU10
28	WING TANK PROBE, FQI	ONTIC ENGINEERING & MANUFACTURING UK	0212KTU11
28	WING TANK PROBE, FQI	ONTIC ENGINEERING & MANUFACTURING UK	0212KTU11
28	CHECK VALVE	EATON AEROSPACE	9811839
28	WING TANK PROBE, FQI	ONTIC ENGINEERING & MANUFACTURING UK	0212KTU17
28	WING TANK PROBE, FQI	ONTIC ENGINEERING & MANUFACTURING UK	0212KTU17
28	CHECK VALVE	EATON AEROSPACE	9811839
28	WING TANK PROBE, FQI	ONTIC ENGINEERING & MANUFACTURING UK	0212KTU13
28	WING TANK PROBE, FQI	ONTIC ENGINEERING & MANUFACTURING UK	0212KTU13
28	CHECK VALVE	EATON AEROSPACE	9811839
28	CENTRE TANK PROBE, FQI	ONTIC ENGINEERING & MANUFACTURING UK	0212KTU14
28	CHECK VALVE	EATON AEROSPACE	9811839
28	CENTRE TANK PROBE, FQI	ONTIC ENGINEERING & MANUFACTURING UK	0212KTU14
28	CHECK VALVE	EATON AEROSPACE	9811839
28	CENTRE TANK PROBE, FQI	ONTIC ENGINEERING & MANUFACTURING UK	0212KTU14
28	SENSOR-FUEL LEVEL	SIMMONDS PRECISION PRODUCTS BFGOODRI	3530000-1
28	SENSOR-FUEL LEVEL	SIMMONDS PRECISION PRODUCTS BFGOODRI	3530000-1
28	CHECK VALVE	EATON AEROSPACE	9811839
28	CENTRE TANK PROBE, FQI	ONTIC ENGINEERING & MANUFACTURING UK	0212KTU14
28	SENSOR-FUEL LEVEL	SIMMONDS PRECISION PRODUCTS BFGOODRI	3530000-1
28	SENSOR-FUEL LEVEL	SIMMONDS PRECISION PRODUCTS BFGOODRI	3530000-1
28	CENTRE TANK PROBE, FQI	ONTIC ENGINEERING & MANUFACTURING UK	0212KTU15
28	FUEL TK OVERPRESSURE PROTECTOR	INTERTECHNIQUE	L95F100-603
28	FUEL TK OVERPRESSURE PROTECTOR	INTERTECHNIQUE	L95F100-603
28	TRANSFER VALVE DRIVE SHAFT	HIGH TEMPERATURE ENGINEERS LTD	HTE900096
28	TRANSFER VALVE DRIVE SHAFT	HIGH TEMPERATURE ENGINEERS LTD	HTE900095
28	TRANSFER VALVE DRIVE SHAFT	HIGH TEMPERATURE ENGINEERS LTD	HTE900096
28	TRANSFER VALVE DRIVE SHAFT	HIGH TEMPERATURE ENGINEERS LTD	HTE900095
28	AIR RELEASE VALVE	EATON AEROSPACE	FRH280002
28	AIR RELEASE VALVE	EATON AEROSPACE	FRH280002
28	FUEL TK OVERPRESSURE PROTECTOR	INTERTECHNIQUE	L95F50-603
28	RELIEF VALVE	EATON AEROSPACE	9815715
28	FUEL TK OVERPRESSURE PROTECTOR	INTERTECHNIQUE	L95F50-603
28	FUEL TK OVERPRESSURE PROTECTOR	INTERTECHNIQUE	L95F50-603

28	CHECK VALVE	EATON AEROSPACE	9811820
28	CHECK VALVE	EATON AEROSPACE	9811820
28	PRESSURE HOLDING VALVE	HIGH TEMPERATURE ENGINEERS LTD	HTE420044
28	PRESSURE HOLDING VALVE	HIGH TEMPERATURE ENGINEERS LTD	HTE420044
28	CHECK VALVE	HIGH TEMPERATURE ENGINEERS LTD	HTE490012
28	CHECK VALVE	HIGH TEMPERATURE ENGINEERS LTD	HTE490012
28	CHECK VALVE	HIGH TEMPERATURE ENGINEERS LTD	HTE490012
28	CHECK VALVE	HIGH TEMPERATURE ENGINEERS LTD	HTE490012
28	FUEL CONTROL VALVE	HIGH TEMPERATURE ENGINEERS LTD	HTE900189
28	FUEL CONTROL VALVE	HIGH TEMPERATURE ENGINEERS LTD	HTE900189
28	FUEL JET PUMP	EATON AEROSPACE	3901515
28	FUEL JET PUMP	EATON AEROSPACE	3901515
28	AIR INLET VALVE	HIGH TEMPERATURE ENGINEERS LTD	HTE310021-1
28	AIR INLET VALVE	HIGH TEMPERATURE ENGINEERS LTD	HTE310021-1
28	FUEL VENT PROTECTOR	INTERTECHNIQUE SA	786073-1-0
28	FUEL VENT PROTECTOR	INTERTECHNIQUE SA	786073-1-0
28	LEAK-MONITOR	INTERTECHNIQUE SA	L83A13-617
28	PLUG SHORTING	CONNECTEURS ELECTRIQUES DEUTSCH	F561626PZ953F
28	PLUG SHORTING	CONNECTEURS ELECTRIQUES DEUTSCH	F561626PZ953F
28	PLUG SHORTING	CONNECTEURS ELECTRIQUES DEUTSCH	F561626PZ953F
28	PLUG SHORTING	CONNECTEURS ELECTRIQUES DEUTSCH	F561626PZ953F
28	FUEL LOW PRESS.SWITCH	EATON LIMITED	FRH100014A
28	ADAPTOR	CONNECTEURS ELECTRIQUES DEUTSCH	F251626WPSN923A
28	ADAPTOR	CONNECTEURS ELECTRIQUES DEUTSCH	F251626ZPSY923B
29	RAT-ACTUATOR	HAMILTON SUNDSTRAND CORP	764711C
29	RAM AIR TURBINE	HAMILTON SUNDSTRAND CORP	766352B
29	RAT STOW PANEL	SUNDSTRAND AEROSPACE MECHANICAL	5909780
29	RESERVOIR HYDR. GREEN	GOODRICH ACTUATION SYSTEMS (TRW SYST	C19DS0026
29	FILTER-LP	PALL AEROSPACE	QA05561-01
29	VALVE RELIEF AIR	SITEC AEROSPACE GMBH	70400
29	HYDRAULIK HAND PUMP	AEG SENSORSYSTEME GMBH	6-1404-0000-4
29	CHECK VALVE	CIRCLE SEAL CONTROLS INC	ZCV64-20
29	CHECK VALVE	CIRCLE SEAL CONTROLS INC	ZCV64-12
29	HYDRAULIC CHECK VALVE	CIRCLE SEAL CONTROLS INC	ZCV63-6-7
29	HYDRAULIC CHECK VALVE	CIRCLE SEAL CONTROLS INC	ZCV63-6-7
29	ENGINE DRIVEN PUMP	PARKER HANNIFIN CORP	4205401
29	FIRE-SHUT-OFF-VALVE	SITEC AEROSPACE GMBH	E03A00
29	HYDR. ACCUMULATOR	HYDAC TECHNOLOGY GMBH	SB209L1A1-1484
29	HIGH PRESSURE GAUGE	MEGGIT SAFETY SYST INC HTL/KIN-TECH	18330904-2
29	SWITCH PRESSURE HYD.	ELEKTRO-METALL EXPORT GMBH	450-1-3100-00
29	FILTER ASSY	PALL AEROSPACE	QA06305-01
29	VALVE,2/2WAY	SITEC AEROSPACE GMBH	70200
29	POWER TRANSFER UNIT	TRIUMPH ACTUATION SYSTEMS LLC	4101002-11
29	HP-MANIFOLD GREEN	LIEBHERR AEROSPACE LINDENBERG GMBH	1559A9900-03
29	PTU-MANIFOLD,HP	LIEBHERR AEROSPACE LINDENBERG GMBH	1555B9900-01
29	CHECK VALVE	CIRCLE SEAL CONTROLS INC	ZCV63-4
29	FILTER HYD. HP	PALL AEROSPACE	QA05593
29	VALVE RESERVOIR FILL.	GOODRICH ACTUATION SYSTEMS (TRW SYST	C51LM0020
29	CHECK VALVE	CIRCLE SEAL CONTROLS INC	ZCV63-6
29	HYDRAULIC CHECK VALVE	CIRCLE SEAL CONTROLS INC	ZCV63-6-7
29	RSVR-PRESSURE UNIT	PALL AEROSPACE	QA07739-02
29	TRANSDUC./SWITCH-TEMP	DIEHL AVIONIK SYSTEM GMBH-STANDORT F	TM113-1

29	PRESSURE GAUGE AIR	MEGGIT SAFETY SYST INC HTL/KIN-TECH	18301905-1
29	VALVE NON RETURN	TRW LUCAS AEROSPACE FMS	B42CA2002
29	VALVE RESTRICT.BLEED	PALL AEROSPACE	QA05877
29	CHECK VALVE	CIRCLE SEAL CONTROLS INC	ZCV63-6
29	CHECK VALVE	CIRCLE SEAL CONTROLS INC	ZCV63-6
29	CHECK VALVE	CIRCLE SEAL CONTROLS INC	ZCV63-4
29	CHECK VALVE	CIRCLE SEAL CONTROLS INC	ZCV63-4
29	INDICATOR QTY.RSVR.	DIEHL AVIONIK SYSTEM GMBH-STANDORT F	VT477-2
29	RESERVOIR HYDR. BLUE	GOODRICH ACTUATION SYSTEMS (TRW SYST	C19BQ0016
29	FILTER-LP	PALL AEROSPACE	QA05604-01
29	VALVE RELIEF AIR	SITEC AEROSPACE GMBH	70400
29	CHECK VALVE	CIRCLE SEAL CONTROLS INC	ZCV63-4
29	HYDRAULIC CHECK VALVE	CIRCLE SEAL CONTROLS INC	ZCV63-6-7
29	HYDR. ACCUMULATOR	HYDAC TECHNOLOGY GMBH	SB209L1A1-1484
29	HIGH PRESSURE GAUGE	MEGGIT SAFETY SYST INC HTL/KIN-TECH	18330904-2
29	SWITCH PRESSURE HYD.	ELEKTRO-METALL EXPORT GMBH	450-2-3100-00
29	ELECTRICAL MOTOR PUMP	EATON AEROSPACE VICKERS SYSTEMS AERQ	974540
29	FILTER ASSY-HYDRAULIC	PALL AEROSPACE	QA05797-01
29	VALVE,2/2WAY	SITEC AEROSPACE GMBH	70200
29	HP-MANIFOLD BLUE	LIEBHERR AEROSPACE LINDENBERG GMBH	1554A9900-02
29	CHECK VALVE	CIRCLE SEAL CONTROLS INC	ZCV63-4
29	CHECK VALVE	CIRCLE SEAL CONTROLS INC	ZCV64-10
29	CHECK VALVE	CIRCLE SEAL CONTROLS INC	ZCV63-6
29	DRAIN VALVE	TRW LUCAS AEROSPACE FMS	C82LL0010
29	CHECK VALVE MANIFOLD	CRISSAIR INC	1M1226
29	TRANSDUC./SWITCH-TEMP	DIEHL AVIONIK SYSTEM GMBH-STANDORT F	TM113-1
29	PRESSURE GAUGE AIR	MEGGIT SAFETY SYST INC HTL/KIN-TECH	18301905-1
29	VALVE NON RETURN	TRW LUCAS AEROSPACE FMS	B42CA2002
29	CHECK VALVE	CIRCLE SEAL CONTROLS INC	ZCV63-6
29	CHECK VALVE	CIRCLE SEAL CONTROLS INC	ZCV63-6
29	CHECK VALVE	CIRCLE SEAL CONTROLS INC	ZCV63-6
29	CHECK VALVE	CIRCLE SEAL CONTROLS INC	ZCV63-4
29	RESERVOIR HYDR.YELLOW	GOODRICH ACTUATION SYSTEMS (TRW SYST	C19DS0016
29	FILTER-LP	PALL AEROSPACE	QA05561-01
29	VALVE RELIEF AIR	SITEC AEROSPACE GMBH	70400
29	HYDRAULIK HAND PUMP	AEG SENSORSYSTEME GMBH	6-1404-0000-4
29	HP-MANIFOLD YELLOW	LIEBHERR AEROSPACE LINDENBERG GMBH	1553A9900-03
29	PTU-MANIFOLD YELLOW	LIEBHERR AEROSPACE LINDENBERG GMBH	1556A9900-04
29	HYDRAULIC CHECK VALVE	CIRCLE SEAL CONTROLS INC	ZCV63-6-7
29	CHECK VALVE	CIRCLE SEAL CONTROLS INC	ZCV64-20
29	CHECK VALVE	CIRCLE SEAL CONTROLS INC	ZCV64-12
29	HYDRAULIC CHECK VALVE	CIRCLE SEAL CONTROLS INC	ZCV63-6-7
29	CHECK VALVE	CIRCLE SEAL CONTROLS INC	ZCV64-10
29	ENGINE DRIVEN PUMP	PARKER HANNIFIN CORP	4205401
29	FIRE-SHUT-OFF-VALVE	SITEC AEROSPACE GMBH	E03A00
29	HYDRAULIC CHECK VALVE	CIRCLE SEAL CONTROLS INC	ZCV63-6-7
29	CHECK VALVE	CIRCLE SEAL CONTROLS INC	ZCV63-8
29	RELIEF VALVE	EATON AEROSPACE VICKERS SYSTEMS AERQ	3022016-000
29	HYDR. ACCUMULATOR	HYDAC TECHNOLOGY GMBH	SB209L1A1-1484
29	HIGH PRESSURE GAUGE	MEGGIT SAFETY SYST INC HTL/KIN-TECH	18330904-2
29	SWITCH PRESSURE HYD.	ELEKTRO-METALL EXPORT GMBH	450-1-3100-00
29	ELECTRICAL MOTOR PUMP	EATON AEROSPACE VICKERS SYSTEMS AERQ	974540

29	HYDRAULIC CHECK VALVE	CIRCLE SEAL CONTROLS INC	ZCV63-6-7
29	FILTER ASSY	PALL AEROSPACE	QA06305-01
29	VALVE,2/2WAY	SITEC AEROSPACE GMBH	70200
29	CHECK VALVE	CIRCLE SEAL CONTROLS INC	ZCV63-4
29	CHECK VALVE	CIRCLE SEAL CONTROLS INC	ZCV63-6
29	CHECK VALVE	CIRCLE SEAL CONTROLS INC	ZCV63-4
29	TRANSDUC./SWITCH-TEMP	DIEHL AVIONIK SYSTEM GMBH-STANDORT F	TM113-1
29	PRESSURE GAUGE AIR	MEGGIT SAFETY SYST INC HTL/KIN-TECH	18301905-1
29	VALVE NON RETURN	TRW LUCAS AEROSPACE FMS	B42CA2002
29	HYDRAULIC CHECK VALVE	CIRCLE SEAL CONTROLS INC	ZCV63-6-7
30	WINDOW HEAT COMPUTER	INTERTECHNIQUE SA	733903-1-1
30	WINDOW HEAT COMPUTER	INTERTECHNIQUE SA	733903-1-1
30	RAIN REPELLENT GAGE ASSY	LE BOZEC FILTRATION ET SYSTEMES	4020W35-3
30	CONTROL UNIT	AIRBUS OPERATIONS GMBH CABIN ELECTRO	Z212H0001110
30	DRAINMAST	EADS AIRBUS GMBH	4-60000H883-00
30	ROTARY SWITCH	IEC ELECTRONIQUE SAM	058-001-00
30	ROTARY SWITCH	IEC ELECTRONIQUE SAM	058-001-00
30	CONTROL UNIT	AIRBUS OPERATIONS GMBH CABIN ELECTRO	Z220H0002110
30	PROBES HEAT COMPUTER	INTERTECHNIQUE SA	733902-1-2
30	PROBES HEAT COMPUTER	INTERTECHNIQUE SA	733902-1-2
30	PROBES HEAT COMPUTER	INTERTECHNIQUE SA	733902-1-2
30	LH.MOTOR CONVERTER	ECE EQUIPEMENT	4279204
30	RH.MOTOR CONVERTER	ECE EQUIPEMENT	4279198
30	WING ANTI ICING CONTROL VALVE	HONEYWELL INTL INC	38E93-6
30	WING ANTI ICING CONTROL VALVE	HONEYWELL INTL INC	38E93-6
30	DRAINMAST	EADS AIRBUS GMBH	4-60000H883-00
30	CONTROL UNIT	AIRBUS OPERATIONS GMBH CABIN ELECTRO	Z220H0002110
30	LIGHTED VISUAL ICING INDICATOR	MADELEC AERO SARL	864-001
31	FLIGHT DATA RECORDER	L-3 COMMUNICATIONS CORP	2100-4045-00
31	CFDIU	THALES AVIONICS SA	C12860AA03
31	DISPLAY MANAGEMENT COMPUTER	THALES AVIONICS SA	1982660116
31	EIS SOFTWARE	THALES AVIONICS SA	SXT4DXEESAX1100
31	DISPLAY MANAGEMENT COMPUTER	THALES AVIONICS SA	1982660116
31	EIS SOFTWARE	THALES AVIONICS SA	SXT4DXEESAX1100
31	DISPLAY MANAGEMENT COMPUTER	THALES AVIONICS SA	1982660116
31	EIS SOFTWARE	THALES AVIONICS SA	SXT4DXEESAX1100
31	SDAC	AIRBUS FRANCE	350E5500205
31	SDAC	AIRBUS FRANCE	350E5500205
31	FLIGHT WARNING COMPUTER	AIRBUS FRANCE	350E053021212
31	FLIGHT WARNING COMPUTER	AIRBUS FRANCE	350E053021212
31	CLOCK	AIR PRECISION	APE5100-1
31	WIRELESS GND LINK-DAR	TELEDYNE CONTROLS	2243800-362
31	WGL-QAR SOFTWARE	TELEDYNE CONTROLS	2234507-1
31	EDU VIDEO	THALES AVIONICS SA	C19755BA01
31	EIS SOFTWARE	THALES AVIONICS SA	SXT4DXEESAX1100
31	EDU VIDEO	THALES AVIONICS SA	C19755BA01
31	EIS SOFTWARE	THALES AVIONICS SA	SXT4DXEESAX1100
31	EDU VIDEO	THALES AVIONICS SA	C19755BA01
31	EIS SOFTWARE	THALES AVIONICS SA	SXT4DXEESAX1100
31	EDU VIDEO	THALES AVIONICS SA	C19755BA01
31	EIS SOFTWARE	THALES AVIONICS SA	SXT4DXEESAX1100
31	MULTI-USE PRINTER	ALLIED-SIGNAL INC AIR TRANSPORT AVIO	8055515-4501

31	EDU VIDEO	THALES AVIONICS SA	C19755BA01
31	EIS SOFTWARE	THALES AVIONICS SA	SXT4DXEESAX1100
31	EDU VIDEO	THALES AVIONICS SA	C19755BA01
31	EIS SOFTWARE	THALES AVIONICS SA	SXT4DXEESAX1100
31	LINEAR ACCELEROMETER	L-3 COMMUNICATIONS CORP	17A717-03-00
31	ECAM CONTROL PANEL	AIRBUS FRANCE	35-0L0-1003-06
31	COCKPIT LOUDSPEAKER AMPLI	AIRBUS FRANCE	35-0D5-1003
31	COCKPIT LOUDSPEAKER AMPLI	AIRBUS FRANCE	35-0D5-1003
31	FLT DTA INTF MAN UNIT	TELEDYNE CONTROLS	2234320-01-01
31	FDIMU DISK FDIU PART	TELEDYNE CONTROLS	F320-001-8804
31	FDIMU DISK DMU CFMI	TELEDYNE CONTROLS	D09SACF05C00000
31	DLRB	SAGEM DEFENSE SECURITE SA	DLRBA000
32	NW.STRG.HANDWHEEL XMTR.UNIT	SKF AEROSPACE FRANCE	322200-7M00
32	NW.STRG.HANDWHEEL XMTR.UNIT	SKF AEROSPACE FRANCE	322200-8M00
32	BRAKE TEMP MONITORING UNIT	THALES AVIONICS SA	35-1H5-1002
32	NWS FEEDBACK SENSOR	MESSIER BUGATTI SA	E21336000
32	BRAKE TEMP MONITORING UNIT	THALES AVIONICS SA	35-1H5-1002
32	NWS FEEDBACK SENSOR	MESSIER BUGATTI SA	E21336000
32	L.G. CONTROL + INTERFACE UNIT	ELDEC CORP.	80-178-03-88013
32	L.G. CONTROL + INTERFACE UNIT	ELDEC CORP.	80-178-03-88013
32	NLG ELECTRICAL BOX	MESSIER BUGATTI SA	D23119751
32	LANDING GEAR CONTROL LEVER	ECE EQUIPEMENT	215TS07Y00
32	ELECTRO-HYD.STEERING MODULE	MESSIER BUGATTI SA	C24736100-1
32	ELECTRO-HYD.STEERING MODULE	MESSIER BUGATTI SA	D24157000
32	XMTR UNIT-BRK PEDAL	MESSIER BUGATTI SA	E21324000-2
32	BRAKING/STEERING CTL.UNIT	MESSIER BUGATTI SA	E21327106
32	TACHOMETER	MESSIER BUGATTI SA	C20105000-2
32	TACHOMETER	MESSIER BUGATTI SA	C20105000-2
32	TACHOMETER	MESSIER BUGATTI SA	C20105000-2
32	TACHOMETER	MESSIER BUGATTI SA	C20105000-2
32	SAFETY VALVE L.G.S.	LIEBHERR AEROSPACE LINDENBERG GMBH	1905A0000-01
32	BRAKE PRESSURE INDICATOR	THALES AVIONICS SA	64882-206-1
32	PWR SUPPLY DECOUPLING UNIT	ECE EQUIPEMENT	530AL01CN
32	PWR SUPPLY DECOUPLING UNIT	ECE EQUIPEMENT	530AL01CN
32	ABCU	MESSIER BUGATTI SA	E21328002
32	ALTN BRAKE SELECTOR VALVE	MESSIER BUGATTI SA	C24993000
32	PARK BRAKE CTL VALVE	MESSIER BUGATTI SA	D24001000
32	XMTR UNIT-BRK PEDAL	MESSIER BUGATTI SA	E21324000-2
32	LEG ASSY AND DRESSINGS, MLG	MESSIER DOWTY LTD	10-450301-000
32	LEG ASSY AND DRESSINGS, MLG	MESSIER DOWTY LTD	10-450401-000
32	MLG ACTUATOR CYL	MESSIER DOWTY LTD	10-451701-000
32	MLG ACTUATOR CYL	MESSIER DOWTY LTD	10-451701-000
32	STRUT ASSY MLG, SIDESTAY L	MESSIER DOWTY LTD	10-451901-000
32	STRUT ASSY MLG, SIDESTAY R	MESSIER DOWTY LTD	10-452001-000
32	MLG UPLOCK LH	GE AVIATION SYSTEMS LTD	201117025
32	MLG UPLOCK RH	GE AVIATION SYSTEMS LTD	201117026
32	CUT-OUT VALVE	GE AVIATION SYSTEMS LTD	114086002
32	VENT VALVE	GE AVIATION SYSTEMS LTD	114083004
32	DOOR BY-PASS VALVE	GE AVIATION SYSTEMS LTD	114087008
32	DOOR BY-PASS VALVE	GE AVIATION SYSTEMS LTD	114087008
32	HYDRAULIC CHECK VALVE	CIRCLE SEAL CONTROLS INC	ZCV63-6-7
32	DOOR UPLOCK, MLG	GE AVIATION SYSTEMS LTD	201122009

32	DOOR UPLOCK, MLG	GE AVIATION SYSTEMS LTD	201122009
32	DOOR ACTUATOR, MLG	GE AVIATION SYSTEMS LTD	114122014
32	DOOR ACTUATOR, MLG	GE AVIATION SYSTEMS LTD	114122014
32	SELECTOR VALVE MANIFOLD ASSY	GE AVIATION SYSTEMS LTD	114170009
32	HYDRAULIC CHECK VALVE	CIRCLE SEAL CONTROLS INC	ZCV63-6-7
32	NLG ACTUATOR	MESSIER BUGATTI SA	D23613000
32	STRUT ASSY	MESSIER BUGATTI SA	D23596000-3
32	HYDRAULIC CHECK VALVE	CIRCLE SEAL CONTROLS INC	ZCV63-6-7
32	NLG.UPLOCK ASSY	MESSIER BUGATTI SA	C24730001-9
32	NLG.DOOR ACTUATING CYLINDER	MESSIER BUGATTI SA	22715-000-02
32	VENT VALVE	GE AVIATION SYSTEMS LTD	114083004
32	DOOR BY-PASS VALVE	GE AVIATION SYSTEMS LTD	114087008
32	NLG.DOOR UPLOCK ASSY	MESSIER BUGATTI SA	C24730100-3
32	CHECK VALVE	CIRCLE SEAL CONTROLS INC	ZCV64-12
32	ACCUMULATOR BRAKE	OLAER INDUSTRIES S.A	088256-04644
32	FILTER ASSY-HYDRAULIC	PALL AEROSPACE	QA05797-01
32	HIGH PRESSURE GAUGE	MEGGIT SAFETY SYST INC HTL/KIN-TECH	18330904-2
32	CHECK VALVE	CIRCLE SEAL CONTROLS INC	ZCV63-8
32	CHECK VALVE	CIRCLE SEAL CONTROLS INC	ZCV63-8
32	MANIFOLD-NORM BRK SERVOVALVE	MESSIER BUGATTI SA	C24837102-2
32	MANIFOLD-NORM BRK SERVOVALVE	MESSIER BUGATTI SA	C24837102-2
32	SAFETY VALVE L.G.S.	MESSIER BUGATTI SA	762080-1
32	SAFETY VALVE L.G.S.	MESSIER BUGATTI SA	762080-1
32	NLG TYRE (30X8.8R15)	MICHELIN MANUFACTURE FRANCAISE PNEUS	M08201
32	NLG TYRE (30X8.8R15)	MICHELIN MANUFACTURE FRANCAISE PNEUS	M08201
32	MLG.BRAKE ASSY	MESSIER BUGATTI SA	C20225510
32	MLG.BRAKE ASSY	MESSIER BUGATTI SA	C20225510
32	MLG.BRAKE ASSY	MESSIER BUGATTI SA	C20225510
32	MLG.BRAKE ASSY	MESSIER BUGATTI SA	C20225510
32	MLG.TYRE (46X17R20)	MICHELIN MANUFACTURE FRANCAISE PNEUS	M01103-02
32	MLG.TYRE (46X17R20)	MICHELIN MANUFACTURE FRANCAISE PNEUS	M01103-02
32	MLG.TYRE (46X17R20)	MICHELIN MANUFACTURE FRANCAISE PNEUS	M01103-02
32	MLG.TYRE (46X17R20)	MICHELIN MANUFACTURE FRANCAISE PNEUS	M01103-02
32	MLG.WHEEL ASSY	MESSIER BUGATTI SA	C20195162
32	MLG.WHEEL ASSY	MESSIER BUGATTI SA	C20195162
32	MLG.WHEEL ASSY	MESSIER BUGATTI SA	C20195162
32	MLG.WHEEL ASSY	MESSIER BUGATTI SA	C20195162
32	NLG.WHEEL.ASSY	GOODRICH CORP DBA AIRCRAFT WHEELS BR	3-1531-3
32	NLG.WHEEL.ASSY	GOODRICH CORP DBA AIRCRAFT WHEELS BR	3-1531-3
32	TOWING ADAPTER ASSY	MESSIER BUGATTI SA	D23278100
32	CHECK VALVE	CIRCLE SEAL CONTROLS INC	ZCV63-8
32	TORQUE LINK DAMPER	MESSIER DOWTY LTD	10-450701-000
32	TORQUE LINK DAMPER	MESSIER DOWTY LTD	10-450701-000
32	ALTN BRAKE MANIFOLD	MESSIER BUGATTI SA	D24006000
32	ALTN BRAKE MANIFOLD	MESSIER BUGATTI SA	D24005000
32	FILTER ASSY-HYDRAULIC	PALL AEROSPACE	QA05797-01
32	BRAKE FAN WHEEL PART	TECHNOFAN	RU1502U01
32	BRAKE FAN WHEEL PART	TECHNOFAN	RU1502U01
32	BRAKE FAN WHEEL PART	TECHNOFAN	RU1502U01
32	BRAKE FAN WHEEL PART	TECHNOFAN	RU1502U01
32	BRAKE FAN WHEEL PART	TECHNOFAN	DR1502C00
32	BRAKE FAN WHEEL PART	TECHNOFAN	DR1502C00

32	BRAKE FAN WHEEL PART	TECHNOFAN	DR1502C00
32	BRAKE FAN WHEEL PART	TECHNOFAN	DR1502C00
32	NLG LEG ASSY	MESSIER DOWTY SA	D23757500-9
32	SAFETY VALVE L.G.S.	MESSIER BUGATTI SA	762080-1
33	RUNWAY TURNOFF LIGHT	ECE EQUIPEMENT & CONSTRUCTION ELEC S	8000281Y00
33	RUNWAY TURNOFF LIGHT	ECE EQUIPEMENT & CONSTRUCTION ELEC S	8000281Y00
33	POWER SUPPLY UNIT	GOODRICH HELLA AEROSPACE LIGHTING SY	8ES455012-06
33	LH.WING/ENGINE SCAN LIGHT	ECE EQUIPEMENT & CONSTRUCTION ELEC S	8000959Y00
33	LOGO LIGHT	GOODRICH HELLA AEROSPACE LIGHTING SY	1X2005097-00
33	POWER SUPPLY UNIT	GOODRICH HELLA AEROSPACE LIGHTING SY	8ES455012-06
33	RH.WING/ENGINE SCAN LIGHT	ECE EQUIPEMENT & CONSTRUCTION ELEC S	8000960Y00
33	LOGO LIGHT	GOODRICH HELLA AEROSPACE LIGHTING SY	1X2005097-00
33	STROBE LIGHT	GOODRICH HELLA AEROSPACE LIGHTING SY	2LA455010-00
33	LANDING LIGHT	ECE EQUIPEMENT & CONSTRUCTION ELEC S	4315542
33	TAKE-OFF LIGHT	ECE EQUIPEMENT & CONSTRUCTION ELEC S	8000283Y00
33	STROBE LIGHT	GOODRICH HELLA AEROSPACE LIGHTING SY	2LA455010-00
33	LANDING LIGHT	ECE EQUIPEMENT & CONSTRUCTION ELEC S	4315542
33	TAXI LIGHT	ECE EQUIPEMENT & CONSTRUCTION ELEC S	8000282Y00
33	WING TIP NAVIGATION LIGHT	GOODRICH HELLA AEROSPACE LIGHTING SY	727-1155-02
33	WING TIP NAVIGATION LIGHT	GOODRICH HELLA AEROSPACE LIGHTING SY	727-1154-02
33	EMERG.POWER SUPPLY	DIEHL LUFTFAHRT ELEKTRONIK GMBH	3214-62-10
33	EMERG.POWER SUPPLY	DIEHL LUFTFAHRT ELEKTRONIK GMBH	3214-62-10
33	EMERG.POWER SUPPLY	DIEHL LUFTFAHRT ELEKTRONIK GMBH	3214-62-10
33	RWD FACING NAV LIGHT XFMR	GOODRICH HELLA AEROSPACE LIGHTING SY	8ES403703-02
33	EMERG.POWER SUPPLY	DIEHL LUFTFAHRT ELEKTRONIK GMBH	3214-62-10
33	WING LED STROBE PSU	GOODRICH HELLA AEROSPACE LIGHTING SY	8ES456513-01
33	RWD FACING NAVIGATION LIGHT	GOODRICH HELLA AEROSPACE LIGHTING SY	2LA403702-02
33	WING LED STROBE PSU	GOODRICH HELLA AEROSPACE LIGHTING SY	8ES456513-01
33	LED STROBE LIGHT RH	GOODRICH HELLA AEROSPACE LIGHTING SY	2LA456510-02
33	LED STROBE LIGHT LH	GOODRICH HELLA AEROSPACE LIGHTING SY	2LA456509-02
33	POWER SUPPLY UNIT	GOODRICH HELLA AEROSPACE LIGHTING SY	8ES455440-06
33	TAIL STROBE LIGHT	GOODRICH HELLA AEROSPACE LIGHTING SY	2LA005303-05
33	OWEL FWD/RH	GOODRICH HELLA AEROSPACE LIGHTING SY	2LA005128-10
33	OWEL FWD/LH	GOODRICH HELLA AEROSPACE LIGHTING SY	2LA005127-10
33	OWEL AFT/RH	GOODRICH HELLA AEROSPACE LIGHTING SY	2LA005414-10
33	OWEL AFT/LH	GOODRICH HELLA AEROSPACE LIGHTING SY	2LA005413-10
34	ADIRU	HONEYWELL SENSOR AND GUIDANCE PRODUC	HG2030BE04
34	SOFTWARE-ADIRU OPERATIONAL	HONEYWELL SENSOR AND GUIDANCE PRODUC	HNS512198BE01
34	SOFTWARE-ADIRU DATA TABLE	HONEYWELL SENSOR AND GUIDANCE PRODUC	HNS502205BC01
34	SOFTWARE-ADIRU DATA TABLE 2	HONEYWELL SENSOR AND GUIDANCE PRODUC	HNS512206BA01
34	ADIRU	HONEYWELL SENSOR AND GUIDANCE PRODUC	HG2030BE04
34	SOFTWARE-ADIRU OPERATIONAL	HONEYWELL SENSOR AND GUIDANCE PRODUC	HNS512198BE01
34	SOFTWARE-ADIRU DATA TABLE	HONEYWELL SENSOR AND GUIDANCE PRODUC	HNS502205BC01
34	SOFTWARE-ADIRU DATA TABLE 2	HONEYWELL SENSOR AND GUIDANCE PRODUC	HNS512206BA01
34	ADIRU	HONEYWELL SENSOR AND GUIDANCE PRODUC	HG2030BE04
34	SOFTWARE-ADIRU OPERATIONAL	HONEYWELL SENSOR AND GUIDANCE PRODUC	HNS512198BE01
34	SOFTWARE-ADIRU DATA TABLE	HONEYWELL SENSOR AND GUIDANCE PRODUC	HNS502205BC01
34	SOFTWARE-ADIRU DATA TABLE 2	HONEYWELL SENSOR AND GUIDANCE PRODUC	HNS512206BA01
34	MARKER ANTENNA	CHELTON ANTENNAS GROUPE COBHAM	6204-89-00
34	ATC TRANSPONDER	ACSS-AN L3 COMMUNICATIONS	7517800-10100
34	WEATHER RADAR TRANSCEIVER	ROCKWELL COLLINS INC AIR TRANSPORT D	822-1710-214
34	STANDBY COMPASS	SIRS NAVIGATION LTD	PGA0105W

34	ADF RECEIVER	ROCKWELL COLLINS INC AIR TRANSPORT D	822-0299-020
34	RADIO ALTIMETER TRANSCEIVER	THALES COMMUNICATIONS	9599-607-14943
34	RADIO ALTIMETER TRANSCEIVER	THALES COMMUNICATIONS	9599-607-14943
34	DME INTERROGATOR	ROCKWELL COLLINS INC AIR TRANSPORT D	822-2325-020
34	DME INTERROGATOR	ROCKWELL COLLINS INC AIR TRANSPORT D	822-2325-020
34	ANGLE OF ATTACK SENSOR	THALES AVIONICS SA	C16291AB
34	ANGLE OF ATTACK SENSOR	THALES AVIONICS SA	C16291AB
34	ANGLE OF ATTACK SENSOR	THALES AVIONICS SA	C16291AB
34	ADF ANTENNA	THALES AVIONICS SA	615-2630-102
34	VOR RECEIVER	ROCKWELL COLLINS INC AIR TRANSPORT D	822-0297-020
34	VOR RECEIVER	ROCKWELL COLLINS INC AIR TRANSPORT D	822-0297-020
34	LOCALIZER ANTENNA	CHELTON ANTENNAS GROUPE COBHAM	6207-88-62
34	ATC/DME.ANTENNA	CHELTON ANTENNAS GROUPE COBHAM	2439-89-03
34	ATC/DME.ANTENNA	CHELTON ANTENNAS GROUPE COBHAM	2439-89-03
34	ATC/TCAS CONTROL UNIT	THALES AVIONICS SA	C12404AB02
34	WEATHER RADAR DUAL CTL UNIT	ROCKWELL COLLINS INC AIR TRANSPORT D	622-5130-820
34	VOR.ANTENNA	CHELTON ANTENNAS GROUPE COBHAM	6205-89-63
34	GLIDE ANTENNA	CHELTON ANTENNAS GROUPE COBHAM	6202-89-62
34	RADIO ALTIMETER ANTENNA	THALES AVIONICS SA	9599-607-12352
34	RADIO ALTIMETER ANTENNA	THALES AVIONICS SA	9599-607-12352
34	RADIO ALTIMETER ANTENNA	THALES AVIONICS SA	9599-607-12352
34	RADIO ALTIMETER ANTENNA	THALES AVIONICS SA	9599-607-12352
34	TCAS DIRECTIONAL ANTENNA	ACSS-AN L3 COMMUNICATIONS/THALES	7514081-911
34	TCAS DIRECTIONAL ANTENNA	ACSS-AN L3 COMMUNICATIONS/THALES	7514081-911
34	ATC/DME.ANTENNA	CHELTON ANTENNAS GROUPE COBHAM	2439-89-03
34	ATC/DME.ANTENNA	CHELTON ANTENNAS GROUPE COBHAM	2439-89-03
34	ATC/DME.ANTENNA	CHELTON ANTENNAS GROUPE COBHAM	2439-89-03
34	ATC/DME.ANTENNA	CHELTON ANTENNAS GROUPE COBHAM	2439-89-03
34	WEATHER RADAR ANTENNA MOUNT	ROCKWELL COLLINS INC AIR TRANSPORT D	622-5135-801
34	PITOT TUBE	BF GOODRICH-AIRCR.SENSORS DIV(ROSEMO	0851HL
34	PITOT TUBE	BF GOODRICH-AIRCR.SENSORS DIV(ROSEMO	0851HL
34	PITOT TUBE	BF GOODRICH-AIRCR.SENSORS DIV(ROSEMO	0851HL
34	WEATHER RADAR RT SING MOUNT	ROCKWELL COLLINS INC AIR TRANSPORT D	622-5133-006
34	TOTAL TEMPERATURE SENSOR	BF GOODRICH-AIRCR.SENSORS DIV(ROSEMO	0102ME2GE
34	TOTAL TEMPERATURE SENSOR	BF GOODRICH-AIRCR.SENSORS DIV(ROSEMO	0102ME2GE
34	WEATHER RADAR ANTENNA	ROCKWELL COLLINS INC AIR TRANSPORT D	622-5137-601
34	AIR DATA MODULE	HONEYWELL INC AIR TRANSPORT	PG1152BC02
34	AIR DATA MODULE	HONEYWELL INC AIR TRANSPORT	PG1152BC02
34	AIR DATA MODULE	HONEYWELL INC AIR TRANSPORT	PG1152BC02
34	AIR DATA MODULE	HONEYWELL INC AIR TRANSPORT	PG1152BC02
34	AIR DATA MODULE	HONEYWELL INC AIR TRANSPORT	PG1152BC02
34	AIR DATA MODULE	HONEYWELL INC AIR TRANSPORT	PG1152BC02
34	AIR DATA MODULE	HONEYWELL INC AIR TRANSPORT	PG1152BC02
34	AIR DATA MODULE	HONEYWELL INC AIR TRANSPORT	PG1152BC02
34	ISIS	THALES AVIONICS SA	C16786EA01
34	MMR RECEIVER	ROCKWELL COLLINS INC AIR TRANSPORT D	822-1821-430
34	MMR RECEIVER	ROCKWELL COLLINS INC AIR TRANSPORT D	822-1821-430
34	ACTIVE GPS ANTENNA	ROCKWELL COLLINS INC AIR TRANSPORT D	822-2033-001
34	ACTIVE GPS ANTENNA	ROCKWELL COLLINS INC AIR TRANSPORT D	822-2033-001
34	CMPTR-T/TISS	ACSS-AN L3 COMMUNICATIONS	9005000-10202
35	VALVE-SOLENOID,OXY	INTERTECHNIQUE-EROS	DVE90-07
35	REGULATOR TRANSMITTER	INTERTECHNIQUE-EROS	RCF6708

[illegible]

35	CONTAINER,4MASK	B/E AEROSPACE SYSTEMS GMBH	14C15R215460009
35	CONTAINER,4MASK	B/E AEROSPACE SYSTEMS GMBH	14C15R215460009
35	CONTAINER,4MASK	B/E AEROSPACE SYSTEMS GMBH	14C15L215460009
35	CONTAINER,4MASK	B/E AEROSPACE SYSTEMS GMBH	14C15L215460009
35	CONTAINER,4MASK	B/E AEROSPACE SYSTEMS GMBH	14C15L215460009
35	CONTAINER,4MASK	B/E AEROSPACE SYSTEMS GMBH	14C15L215460009
35	CONTAINER,4MASK	B/E AEROSPACE SYSTEMS GMBH	14C15L215460009
35	CONTAINER,4MASK	B/E AEROSPACE SYSTEMS GMBH	14C15L215460009
35	CONTAINER,4MASK	B/E AEROSPACE SYSTEMS GMBH	14C15R215460009
35	CONTAINER,4MASK	B/E AEROSPACE SYSTEMS GMBH	14C15R215460009
35	CONTAINER,4MASK	B/E AEROSPACE SYSTEMS GMBH	14C15R215460009
35	CONTAINER,4MASK	B/E AEROSPACE SYSTEMS GMBH	14C15R215460009
35	CONTAINER,4MASK	B/E AEROSPACE SYSTEMS GMBH	14C15R215460009
35	CONTAINER,4MASK	B/E AEROSPACE SYSTEMS GMBH	14C15R215460009
35	CONTAINER,4MASK	B/E AEROSPACE SYSTEMS GMBH	14C15R215460009
35	CONTAINER,4MASK	B/E AEROSPACE SYSTEMS GMBH	14C15L215460009
35	CONTAINER,4MASK	B/E AEROSPACE SYSTEMS GMBH	14C15L215460009
35	CONTAINER,4MASK	B/E AEROSPACE SYSTEMS GMBH	14C15L215460009
35	CONTAINER,4MASK	B/E AEROSPACE SYSTEMS GMBH	14C15L215460009
35	CONTAINER,4MASK	B/E AEROSPACE SYSTEMS GMBH	14C15L215460009
35	CONTAINER,4MASK	B/E AEROSPACE SYSTEMS GMBH	14C15R215460009
35	CONTAINER,4MASK	B/E AEROSPACE SYSTEMS GMBH	14C15R215460009
35	OXYGEN CYLINDER ASSY 115CF.	AVOX SYSTEMS INC	891511-14
35	F.F.QUICK DONNING MASK	INTERTECHNIQUE-EROS	MF20-534
35	F.F.QUICK DONNING MASK	INTERTECHNIQUE-EROS	MF20-534
35	F.F.QUICK DONNING MASK	INTERTECHNIQUE-EROS	MF20-534
35	SMOKE HOOD	AVOX SYSTEMS INC	802300-14
35	SMOKE HOOD	AVOX SYSTEMS INC	802300-14
35	SMOKE HOOD	AVOX SYSTEMS INC	802300-14
35	SMOKE HOOD	AVOX SYSTEMS INC	802300-14
35	SMOKE HOOD	AVOX SYSTEMS INC	802300-14
35	SMOKE HOOD	AVOX SYSTEMS INC	802300-14
35	PORTAB.OXYGEN ASSY	AVOX SYSTEMS INC	3552AAADAACXCD
35	PORTAB.OXYGEN ASSY	AVOX SYSTEMS INC	3552AAADAACXCD
35	PORTAB.OXYGEN ASSY	AVOX SYSTEMS INC	3552AAADAACXCD
35	PORTAB.OXYGEN ASSY	AVOX SYSTEMS INC	3552AAADAACXCD
35	PORTAB.OXYGEN ASSY	AVOX SYSTEMS INC	3552AAADAACXCD
36	BLEED MONITORING COMPUTER	INTERTECHNIQUE SA	733901-1-2
36	BLEED MONITORING COMPUTER	INTERTECHNIQUE SA	733901-1-2
36	OVERPRESSURE VALVE	LIEBHERR-AEROSPACE TOULOUSE SA	6740F010000
36	OVERPRESSURE VALVE	LIEBHERR-AEROSPACE TOULOUSE SA	6740F010000
36	CROSS BLEED VALVE	NORD-MICRO AG & CO OHG	4063-16082-3
36	FAN AIR VALVE	LIEBHERR-AEROSPACE TOULOUSE SA	6730F010000
36	FAN AIR VALVE	LIEBHERR-AEROSPACE TOULOUSE SA	6730F010000
36	SOLENOID THERMOSTAT	LIEBHERR-AEROSPACE TOULOUSE SA	341F010000
36	SOLENOID THERMOSTAT	LIEBHERR-AEROSPACE TOULOUSE SA	341F010000
36	HIGH PRESSURE VALVE	LIEBHERR-AEROSPACE TOULOUSE SA	6773F010000
36	HIGH PRESSURE VALVE	LIEBHERR-AEROSPACE TOULOUSE SA	6773F010000
36	BLEED PRESSURE REGUL VALVE	LIEBHERR-AEROSPACE TOULOUSE SA	6774G010000
36	BLEED PRESSURE REGUL VALVE	LIEBHERR-AEROSPACE TOULOUSE SA	6774G010000
36	INTERMED.PRESS.CHECK VALVE	LIEBHERR-AEROSPACE TOULOUSE SA	2293B020000
36	INTERMED.PRESS.CHECK VALVE	LIEBHERR-AEROSPACE TOULOUSE SA	2293B020000
36	PRECOOLER EXCHANGER	LIEBHERR-AEROSPACE TOULOUSE SA	3732A010000
36	PRECOOLER EXCHANGER	LIEBHERR-AEROSPACE TOULOUSE SA	3732A010000

36	TEMP.CONTROL THERMOSTAT	LIEBHERR-AEROSPACE TOULOUSE SA	342B050000
36	TEMP.CONTROL THERMOSTAT	LIEBHERR-AEROSPACE TOULOUSE SA	342B050000
36	VALVE NON RETURN	EATON LIMITED	FRH220034V
36	NON-RETURN VALVE 1/2"	INTERTECHNIQUE SA	L96H15-501
36	NON-RETURN VALVE 1/2"	INTERTECHNIQUE SA	L96H15-501
36	HP GROUND CONNECTOR	EATON LIMITED	HTE370001
46	ATSU	AIRBUS FRANCE	LA2T0G20705C070
46	SW/MD ATSU A/C INTFC	AIRBUS FRANCE	LA2T0J1306D00F1
46	ATSU ARF CONFIG	AIRBUS FRANCE	LA2T0J60005A0F1
46	SOFTWARE-AOC	ROCKWELL COLLINS INC AIR TRANSPORT D	222-6279-232RVA
46	SOFTWARE-AOC DATABASE	ROCKWELL COLLINS INC AIR TRANSPORT D	222-7720-001RVB
46	ATSU ROUTER PARAM	AIRBUS FRANCE	LA2T0J00005E0F1
47	IGGS CONTROLLER	PARKER HANNIFIN CORP ELECTRONIC SYST	367-359-005
47	AIR SEPARATION MODULE	PARKER HANNIFIN FLUID SYSTEM DIVISIO	2060017-102
47	IN-TANK HOUSING	PARKER HANNIFIN CORPORATION	2070054-201
47	VALVE DUAL-FLAPPER	PARKER HANNIFIN CORPORATION	2050121-201
47	IGGS PALLET	PARKER HANNIFIN FLUID SYSTEM DIVISIO	2070066-102
49	300A SINGLE POLE CONTACTOR	ECE EQUIPEMENT	655CC04A0Y00
49	300A SINGLE POLE CONTACTOR	ECE EQUIPEMENT	655CC04A0Y00
49	ECB	HONEYWELL INTL INC	3888394-221205
49	APU	HONEYWELL INTL INC	3800708-1
49	ACTUATOR-APU	ELEKTRO-METALL EXPORT GMBH	106-1-1100-02
49	VIBRAT.ISOLAT.FWD L	BARRY CONTROLS AEROSPACE	94830-09
49	VIBRAT.ISOLAT.FWD R	BARRY CONTROLS AEROSPACE	94830-10
49	VIBRAT.ISOLAT.AFT	BARRY CONTROLS AEROSPACE	94830-11
49	BRACKET FWD LEFT	BARRY CONTROLS AEROSPACE	94830-04
49	BRACKET FWD RIGHT	BARRY CONTROLS AEROSPACE	94830-05
49	BRACKET REAR	BARRY CONTROLS AEROSPACE	94830-06
52	WARNING LIGHT PANEL	GOODRICH HELLA AEROSPACE LIGHTING SY	2LA005469-00
52	WARNING LIGHT PANEL	GOODRICH HELLA AEROSPACE LIGHTING SY	2LA005469-00
52	WARNING LIGHT PANEL	GOODRICH HELLA AEROSPACE LIGHTING SY	2LA005469-01
52	WARNING LIGHT PANEL	GOODRICH HELLA AEROSPACE LIGHTING SY	2LA005469-01
52	WARNING LIGHT PANEL	GOODRICH HELLA AEROSPACE LIGHTING SY	2LA005469-00
52	WARNING LIGHT PANEL	GOODRICH HELLA AEROSPACE LIGHTING SY	2LA005469-00
52	PRESSURE SWITCH	LE BOZEC FILTRATION ET SYSTEMES	1266-100
52	CABIN OVERPRESSURE INDICAT	GOODRICH HELLA AEROSPACE LIGHTING SY	2LA007307-00
52	CABIN OVERPRESSURE INDICAT	GOODRICH HELLA AEROSPACE LIGHTING SY	2LA007307-00
52	CABIN OVERPRESSURE INDICAT	GOODRICH HELLA AEROSPACE LIGHTING SY	2LA007307-00
52	CABIN OVERPRESSURE INDICAT	GOODRICH HELLA AEROSPACE LIGHTING SY	2LA007307-00
52	CDLCU	ADAMS RITE AEROSPACE INC	AR4709-11
52	ELECTRIC STRIKE	ADAMS RITE AEROSPACE INC	AR4714-7
52	ELECTRIC STRIKE, CTR	ADAMS RITE AEROSPACE INC	AR4714-11
52	ELECTRIC STRIKE	ADAMS RITE AEROSPACE INC	AR4714-7
52	DOOR DAMPER CYLINDER	RATIER-FIGEAC SA	FE240-006
52	DOOR DAMPER CYLINDER	RATIER-FIGEAC SA	FE240-006
52	DOOR DAMPER CYLINDER	RATIER-FIGEAC SA	FE240-006
52	DOOR DAMPER CYLINDER	RATIER-FIGEAC SA	FE240-006
52	FLEXIBLE CONTROL	CBA "CONSTR.BREV.D'ALFORTVILLE" SA	72CF8945-00
52	FLEXIBLE CONTROL	CBA "CONSTR.BREV.D'ALFORTVILLE" SA	72CF8945-00
52	FLEXIBLE CONTROL	CBA "CONSTR.BREV.D'ALFORTVILLE" SA	72CF8944-00
52	FLEXIBLE CONTROL	CBA "CONSTR.BREV.D'ALFORTVILLE" SA	72CF8944-00
52	ELECTRIC. SELECTOR VA	LIEBHERR AEROSPACE LINDENBERG GMBH	S4-3402180

52	MANUAL SELECTOR VALVE	LIEBHERR AEROSPACE LINDENBERG GMBH	1567A0000-01
52	CARGO DOOR ACTUATOR	SITEC AEROSPACE GMBH	E20000
52	CARGO DOOR ACTUATOR	SITEC AEROSPACE GMBH	E20000
52	MANUAL SELECTOR VALVE	LIEBHERR AEROSPACE LINDENBERG GMBH	1567A0000-01
52	CARGO DOOR ACTUATOR	SITEC AEROSPACE GMBH	E20000
52	CARGO DOOR ACTUATOR	SITEC AEROSPACE GMBH	E20000
52	DOUBLE CHECK VALVE	CIRCLE SEAL CONTROLS INC	ZCV212
53	NOSE RADOME	AIRBUS FRANCE	D53132110000
56	LH WINDSHIELD PANEL	PILKINGTON AEROSPACE LTD	06282
56	RH WINDSHIELD PANEL	PILKINGTON AEROSPACE LTD	06283
56	LH FIXED SIDE WINDOW	GKN AEROSPACE TRANSPARENCY SYSTEMS L	NH25216-349
56	RH FIXED SIDE WINDOW	GKN AEROSPACE TRANSPARENCY SYSTEMS L	NH25216-350
56	LH SLIDING SIDE WINDOW	GKN AEROSPACE TRANSPARENCY SYSTEMS L	NH25216-1
56	RH SLIDING SIDE WINDOW	GKN AEROSPACE TRANSPARENCY SYSTEMS L	NH25216-2
71	EBU	GOODRICH ROHR INDUSTRIES INC.	642-0104-711
71	EBU	GOODRICH ROHR INDUSTRIES INC.	642-0104-711
71	ENGINE MOUNTS	GOODRICH ROHR INDUSTRIES INC.	642-2000-29
71	ENGINE MOUNTS	GOODRICH ROHR INDUSTRIES INC.	642-2000-29
71	ENGINE MOUNTS	GOODRICH ROHR INDUSTRIES INC.	642-2300-1
71	ENGINE MOUNTS	GOODRICH ROHR INDUSTRIES INC.	642-2300-1
73	ENGINE INTERFACE UNIT	THALES AVIONICS SA	3957985114
73	ENGINE INTERFACE UNIT	THALES AVIONICS SA	3957985114
73	ROTARY SWITCH	IEC ELECTRONIQUE SAM	058-001-00
73	HYDRO MECHANICAL UNIT	CFM INTL	1348M79P14
73	HYDRO MECHANICAL UNIT	CFM INTL	1348M79P14
73	ECU	CFM INTL	2458M04P01
73	SOFTWARE-ECU	CFM INTL	2459M16P03
73	ECU	CFM INTL	2458M04P01
73	SOFTWARE-ECU	CFM INTL	2459M16P03
76	THROTTLE CONTROL UNIT	SKF AEROSPACE FRANCE	330400M01
76	THROTTLE CONTROL UNIT	SKF AEROSPACE FRANCE	330400M01
77	ENG VIB MONITORING UNIT	VIBROMETER AG	241-246-022-004
78	NOZZLE-CORE	GOODRICH ROHR INDUSTRIES INC.	642-4001-501
78	NOZZLE-CORE	GOODRICH ROHR INDUSTRIES INC.	642-4001-501
78	CENTERBODY	GOODRICH ROHR INDUSTRIES INC.	238-0451-523
78	CENTERBODY	GOODRICH ROHR INDUSTRIES INC.	238-0451-523
78	HCU.THRUST REVERSER	GOODRICH ROHR INDUSTRIES INC.	TY2013-11
78	HCU.THRUST REVERSER	GOODRICH ROHR INDUSTRIES INC.	TY2013-11

BFE LIST

ATA	DESCRIPTION DEFINITION/REMARKS	SUPPLIER	PART NUMBER	QTY
23.11 33.00	HFDR transceiver	ROCKWELL COLLINS	822-0990-003	2
23.11 33.20	HFDR antenna coupler	ROCKWELL COLLINS	822-0987-003	2
25.21 41.00	LH STD TPL	B/E AEROSPACE KILKEEL	1029041-001EF06	24
25.21 41.00	RH STD TPL	B/E AEROSPACE KILKEEL	1029041-002EF06	24
25.21 41.00	LH STD TPL, 6" SLIDING BMFT, 0" RECLINE	B/E AEROSPACE KILKEEL	1029041-003EF06	1
25.21 41.00	RH STD TPL, 6" SLIDING BMFT, 0" RECLINE	B/E AEROSPACE KILKEEL	1029041-004EF06	1
25.21 41.00	LH STD TPL, 6" SLIDING BMFT, NO O/B ARM EXIT ROW	B/E AEROSPACE KILKEEL	1029041-005EF06	1
25.21 41.00	RH STD TPL, 6" SLIDING BMFT, NO O/B ARM EXIT ROW	B/E AEROSPACE KILKEEL	1029041-006EF06	1
25.21 41.00	LH STD TPL, NO O/B ARM EXIT ROW, LOW PROFILE CUSHION	B/E AEROSPACE KILKEEL	1029041-007EF06	1
25.21 41.00	RH STD TPL, NO O/B ARM EXIT ROW, LOW PROFILE CUSHION	B/E AEROSPACE KILKEEL	1029041-008EF06	1
25.21 41.00	LH STD TPL, LAST ROW LIMITED RECLINE, NO BMFT, EXTRA NARROW	B/E AEROSPACE KILKEEL	1029041-009EF06	1
25.21 41.00	RH STD TPL, LAST ROW LIMITED RECLINE, NO BMFT, EXTRA NARROW	B/E AEROSPACE KILKEEL	1029041-010EF06	1
25.21 41.00	LH STD TPL, NARROW	B/E AEROSPACE KILKEEL	1029041-011EF06	1
25.21 41.00	RH STD TPL, NARROW	B/E AEROSPACE KILKEEL	1029041-012EF06	1
25.21 41.00	LH IAT TPL, FR	B/E AEROSPACE KILKEEL	1029041-103EF06	1
25.21 41.00	RH IAT TPL, FR	B/E AEROSPACE KILKEEL	1029041-104EF06	1
25.28 20.00	Carpet	BOTANY WEAVING MILL LTD	1BWW1593	108
25.35 10.00	Autonomous steam oven	B/E AEROSPACE NIEUWEGEIN	4333100-01-6600	2
25.35 10.00	Water Heater	B/E AEROSPACE NIEUWEGEIN	4360004-85-0018	2
25.35 20.00	Oven meal carrier	B/E AEROSPACE NIEUWEGEIN	236152	2
25.35 20.00	Meal Tray Atlas	B/E AEROSPACE NIEUWEGEIN	236153	16
25.60 10.12	Remote control panel	THALES AVIONICS SA	S1820513-15	1
25.60 10.13	ELT Carry off bag	THALES AVIONICS SA	S1820511-03	1
25.60 10.13	Programming dongle	THALES AVIONICS SA	S1820514-11	1

25.60 10.13	Portable ELT	THALES AVIONICS SA	S1823502-05	1
25.60 10.13	Emergency Locator Transmitter (ELT) bracket	THALES AVIONICS SA	S1840502-02	1
25.60 10.13	Emergency Locator Transmitter (ELT)	THALES AVIONICS SA	S1851501-01	1
25.60 10.14	Programming dongle AS (portable)	THALES AVIONICS SA	S1820514-01	1
25.65 00.10	Safety belt, extension	AMSAFE AVIATION	2010-2-011-1169	5
25.65 00.10	Safety belt, infant	AMSAFE AVIATION	2010-5-011-1169	10
25.65 00.10	Safety belt, demo	AMSAFE AVIATION	2010-6-011-1169	3
25.66 00.00	Life vest, infant	ZODIAC SERVICES EUROPE	216200-0	10
25.66 00.00	Life vest, demo	ZODIAC SERVICES EUROPE	66532-105	3
25.66 00.00	Life vest, passenger	ZODIAC SERVICES EUROPE	66601-105	188
25.66 00.00	Life vest, cockpit/cabin crew	ZODIAC SERVICES EUROPE	66601-505	7
31.36 52.00	WGL-DAR/QAR software	TELEDYNE	2234507-1	1
31.36 52.00	Recording media CF disk	TELEDYNE	2234641-008	1
31.36 52.00	WGL-DAR/QAR (2 HSPA + modules)	TELEDYNE	2243800-362	1
46.21 04.00	AOC application software diskette for ATSU	ROCKWELL COLLINS	222-6279-232- RVA	1
46.21 04.00	AOC database diskette for ATSU	ROCKWELL COLLINS	222-7720-001-RVB	1